

# **City of Smithville**

## **Community Visioning and Strategic Action Plan project**

# **Think-Tank Workshop**

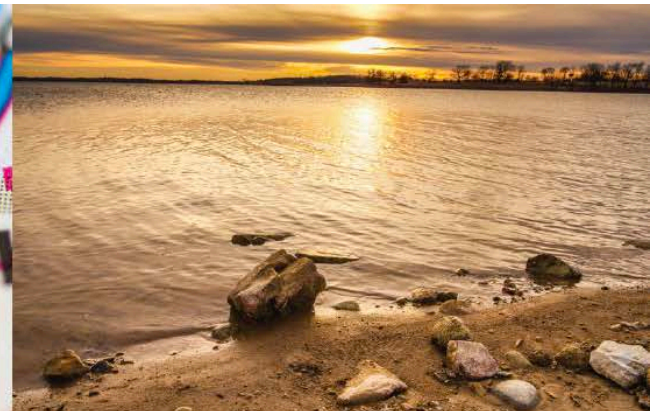
**June 8, 2019**

# City of Smithville Future Think-Tank Workshop

## AGENDA

### High Level Agenda:

8:00am	Registration	11:15am	Scenario Narrative Development
9:00am	Welcome and Introduction		– breakout groups
9:15am	Future Trends and Emergent Issues and connection to Smithville	12:30pm	Lunch
10:15am	Community Survey results	1:00pm	Scenario Presentations
10:30am	Attributes of Successful Communities Exercise	1:40pm	Implications Analysis
10:45am	Break	2:00pm	Plausibility Mapping
11:00am	Key Drivers and Scenario Matrix	2:30pm	Vision Survey
		2:45pm	Next steps
		3:00pm	Finish



# Future iQ Project Team



David Beurle  
Founder and  
CEO



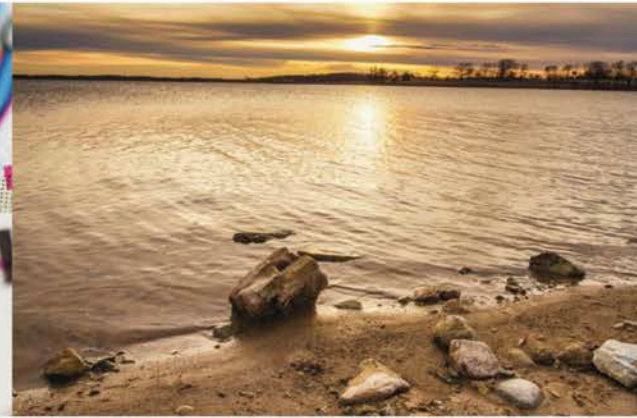
Celine Beurle  
COO &  
Managing  
Director, Future  
iQ Europe



Heather  
Branigin  
Vice President,  
Foresight  
Research

**[www.future-iq.com](http://www.future-iq.com)**





# Project Overview – what are we trying to accomplish





# Recent Planning Work

- Smithville Strategic Plan (2007)
- Strategic Plan Update (2015-2017)
- Smithville Branding Initiative (2016)
- Smithville Citizen Survey (2019)





## Why conduct a Think-Tank?

- Systematic method of **exploring the future**
- Create an awareness of **plausible futures**
- Assists in identifying the **preferred future** for Smithville

# The challenge of the Think-Tank

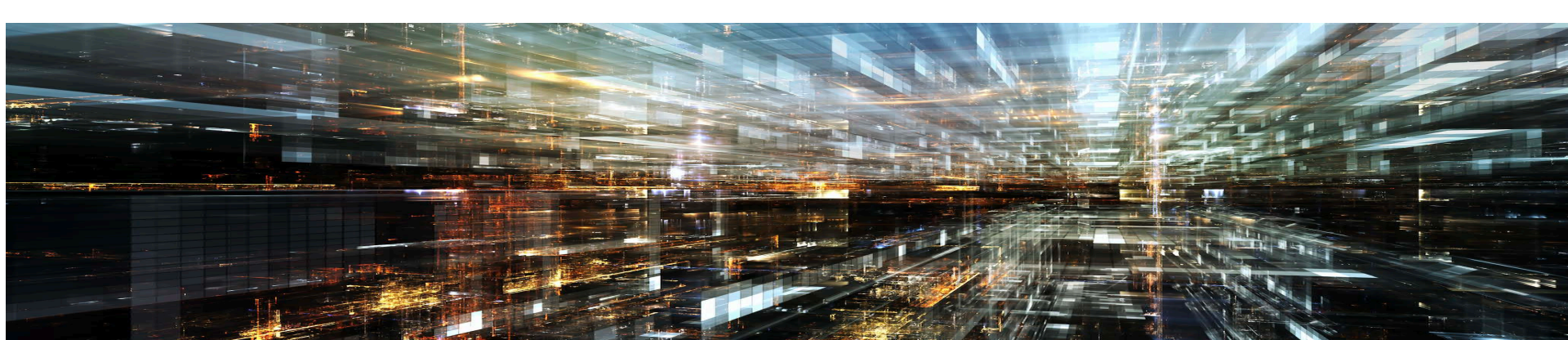
- Explore the future
- Ask the hard questions
- Think creatively

The outcome will be a new view of the future and consideration of the implications for the future of the City of Smithville



# What is Scenario Planning?

- A tool best used to embrace an uncertain future
- Explores a range of plausible futures
- Allows for the consideration of complex and interrelated forces





# Scenario Development



Explore  
Trends and  
Implications  
for  
Smithville

Identify  
'Drivers'  
Shaping the  
future of  
Smithville

Develop  
four  
plausible  
scenarios

Examine  
implications  
for the  
future of  
Smithville

Preferred  
future and  
next steps

Smithville  
for  
implications  
Trends and  
Explore

Smithville  
future of  
Shaping the  
'Drivers',  
Identify

scenarios  
plausible  
four  
Develop

Smithville  
future of  
for the  
implications  
Examine

next steps  
future and  
Preferred

# Understanding Expectations

- Lets be ambitious and realistic. Breadth and depth of topic; transformational in thinking.
- What would you like to see originate from this workshop?
- What do you personally expect from your participation in this workshop?





**Forces impacting the  
world (and regions)**

**What are the  
emerging macro  
drivers..**

**future→iQ<sup>®</sup>**

Create Future Intelligence<sup>®</sup>



# **Macro Trends and Forces of Change Related to . . .**

- **Demographics, population and mass urbanization**
- **Energy, food, water & changing climate**
- **Technology, and the next industrial revolution**





# Demographics, Population and Mass Urbanization

future→iQ

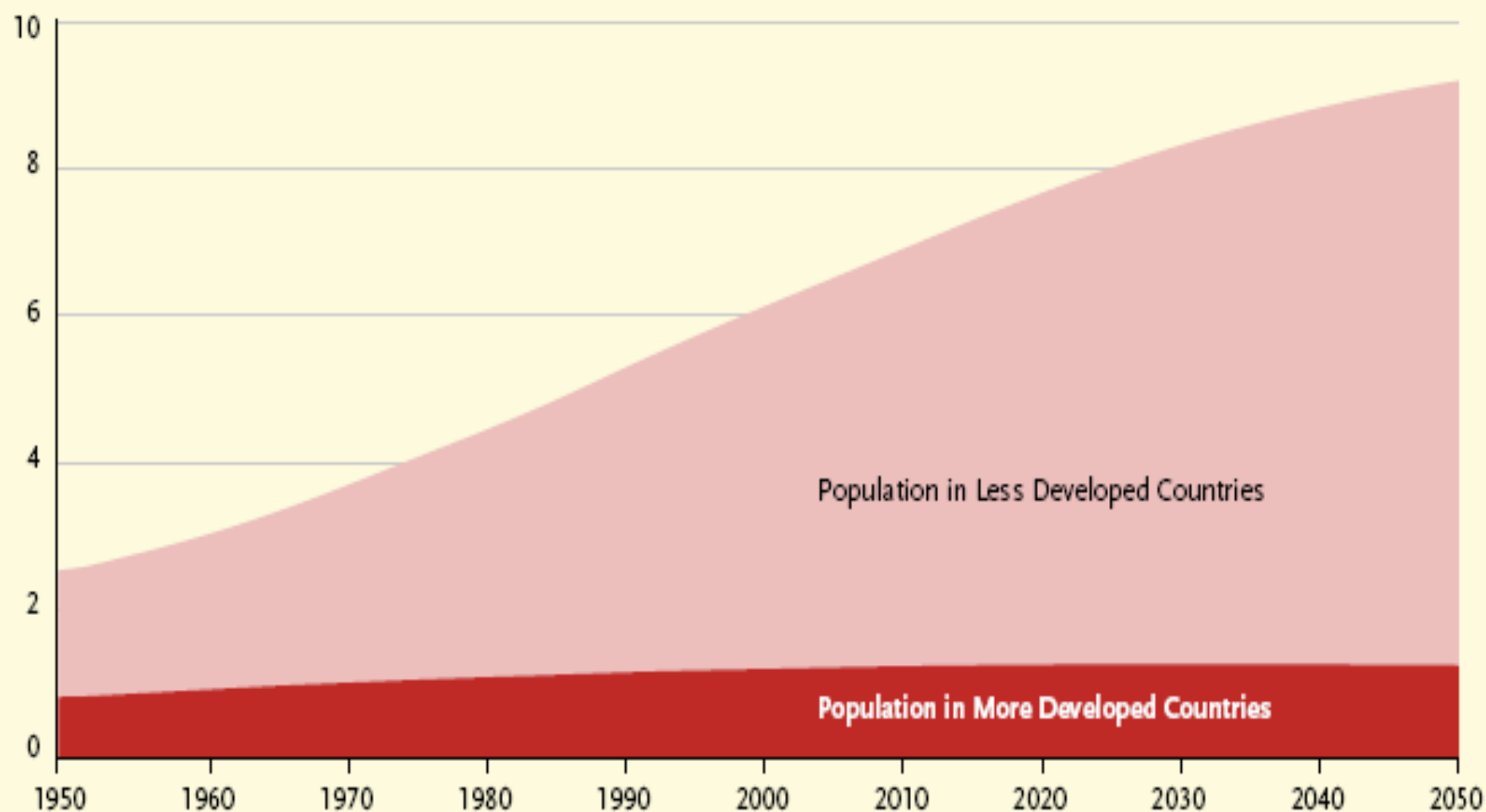
Create Future Intelligence™

---

[www.future-iq.com](http://www.future-iq.com)

## Global Population Growth Is Driven By Developing Countries.

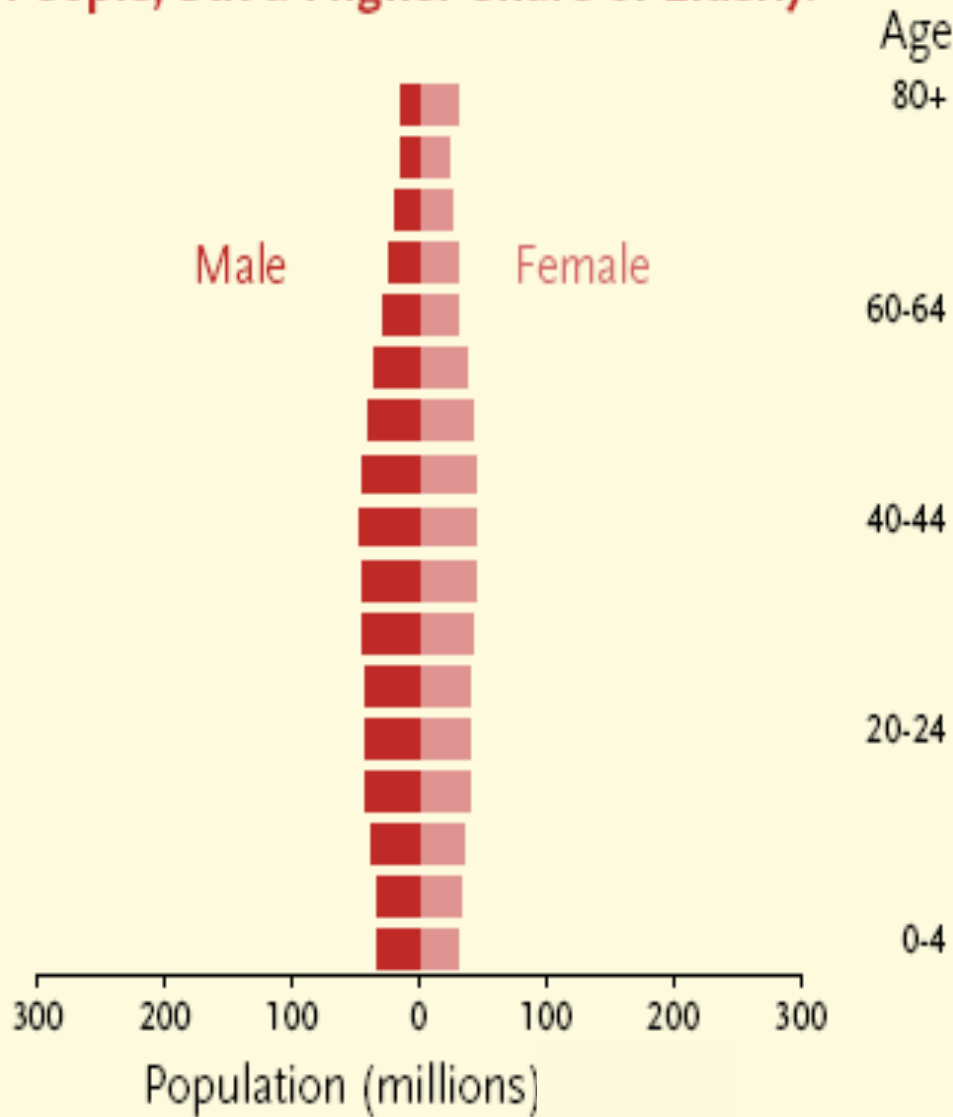
World population in billions, 1950-2050 (projected)



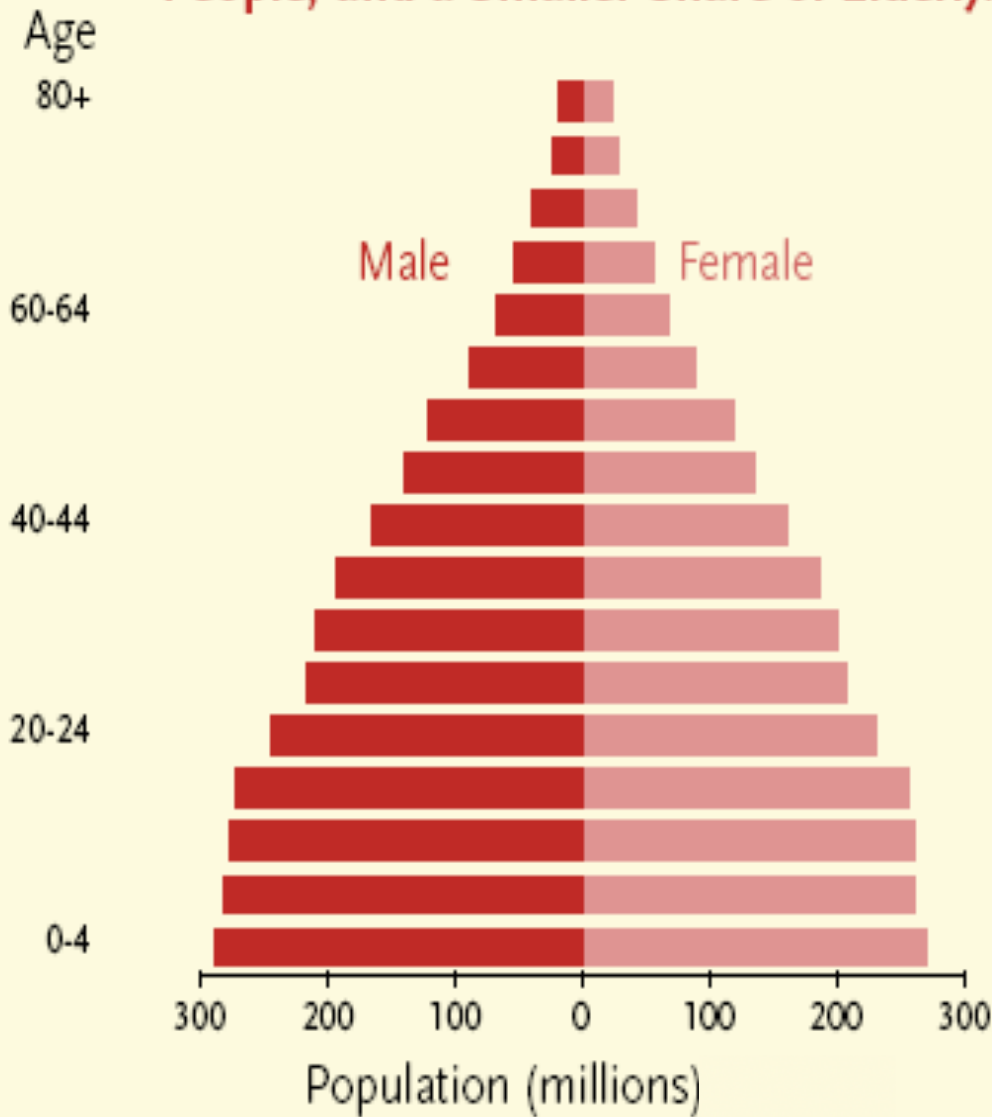
SOURCE: United Nations, *World Population Prospects*.



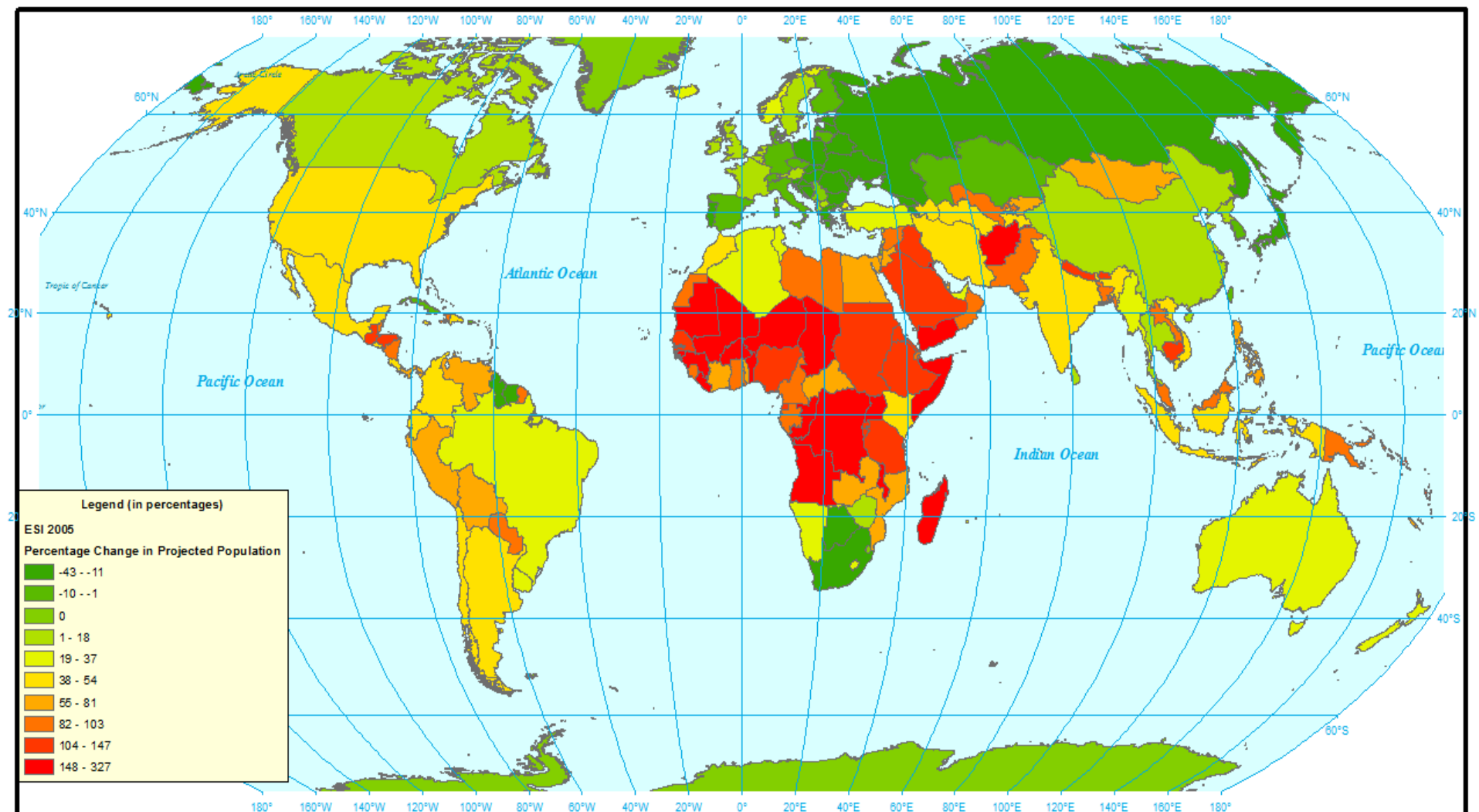
Developed Countries Have Fewer Young People, but a Higher Share of Elderly.



Developing Countries Have More Young People, and a Smaller Share of Elderly.



SOURCE: United Nations, *World Population Prospects*:



## Percentage Change in Projected Population 2004-2050

Robinson Projection  
Central Meridian: 0.00



# Median age in selected countries

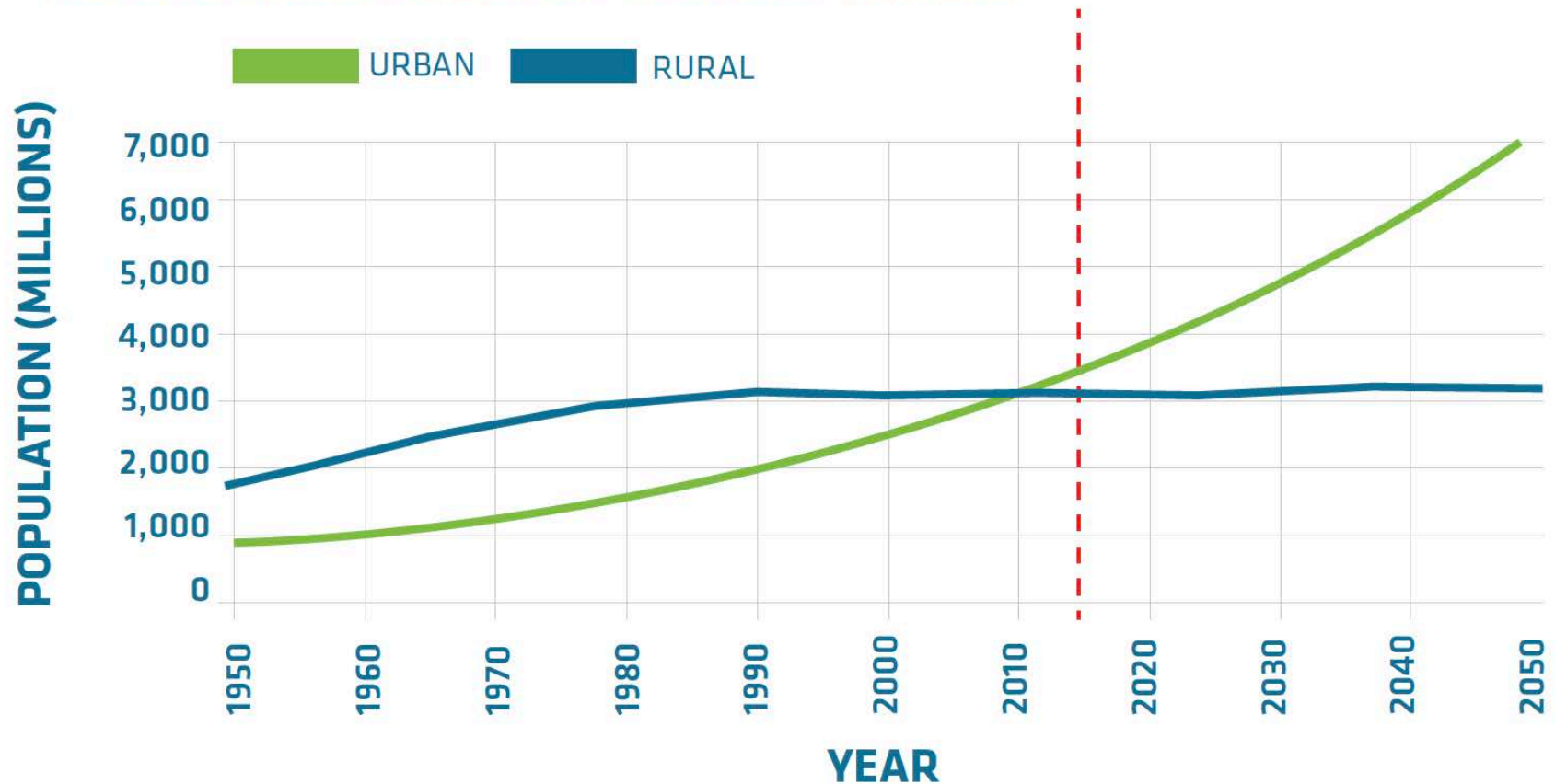




*“The urban population in 2014 accounted for 54% of the total global population, up from 34% in 1960, and continues to grow.”*

*World Health Organization (2015)*

*URBAN AND RURAL POPULATION OF THE WORLD, 1950-2050*



Source: United Nations, Department of Economic and Social Affairs. World Urbanization Prospects, The 2014 Revision.

# AN URBAN WORLD



This graphic depicts countries and territories with 2050 urban populations exceeding 100,000. Circles are scaled in proportion to urban population size. Hover over a country to see how urban it is (percentage of people living in cities and towns) and the size of its urban population (in millions).

## Urban Population

- Greater than 75%
- 50% - 75%
- 25% - 50%
- Less than 25%



1950



# AN URBAN WORLD



This graphic depicts countries and territories with 2050 urban populations exceeding 100,000. Circles are scaled in proportion to urban population size. Hover over a country to see how urban it is (percentage of people living in cities and towns) and the size of its urban population (in millions).

## Urban Population

- Greater than 75%
- 50% - 75%
- 25% - 50%
- Less than 25%



2010





# AN URBAN WORLD



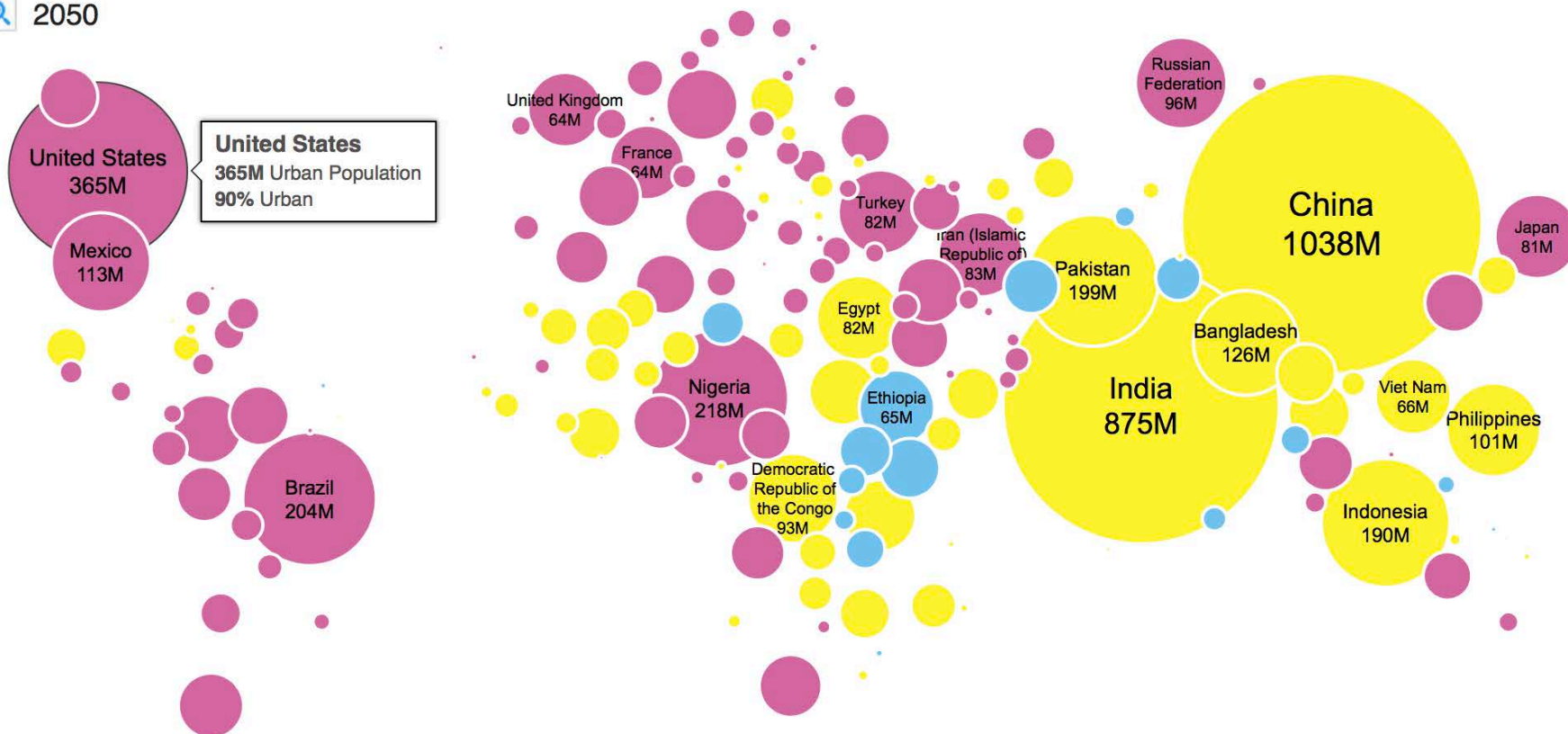
This graphic depicts countries and territories with 2050 urban populations exceeding 100,000. Circles are scaled in proportion to urban population size. Hover over a country to see how urban it is (percentage of people living in cities and towns) and the size of its urban population (in millions).

## Urban Population

- Greater than 75%
- 50% - 75%
- 25% - 50%
- Less than 25%



2050



# Our 2019 Annual Letter

BY BILL & MELINDA GATES



We didn't see this coming



SURPRISE #3

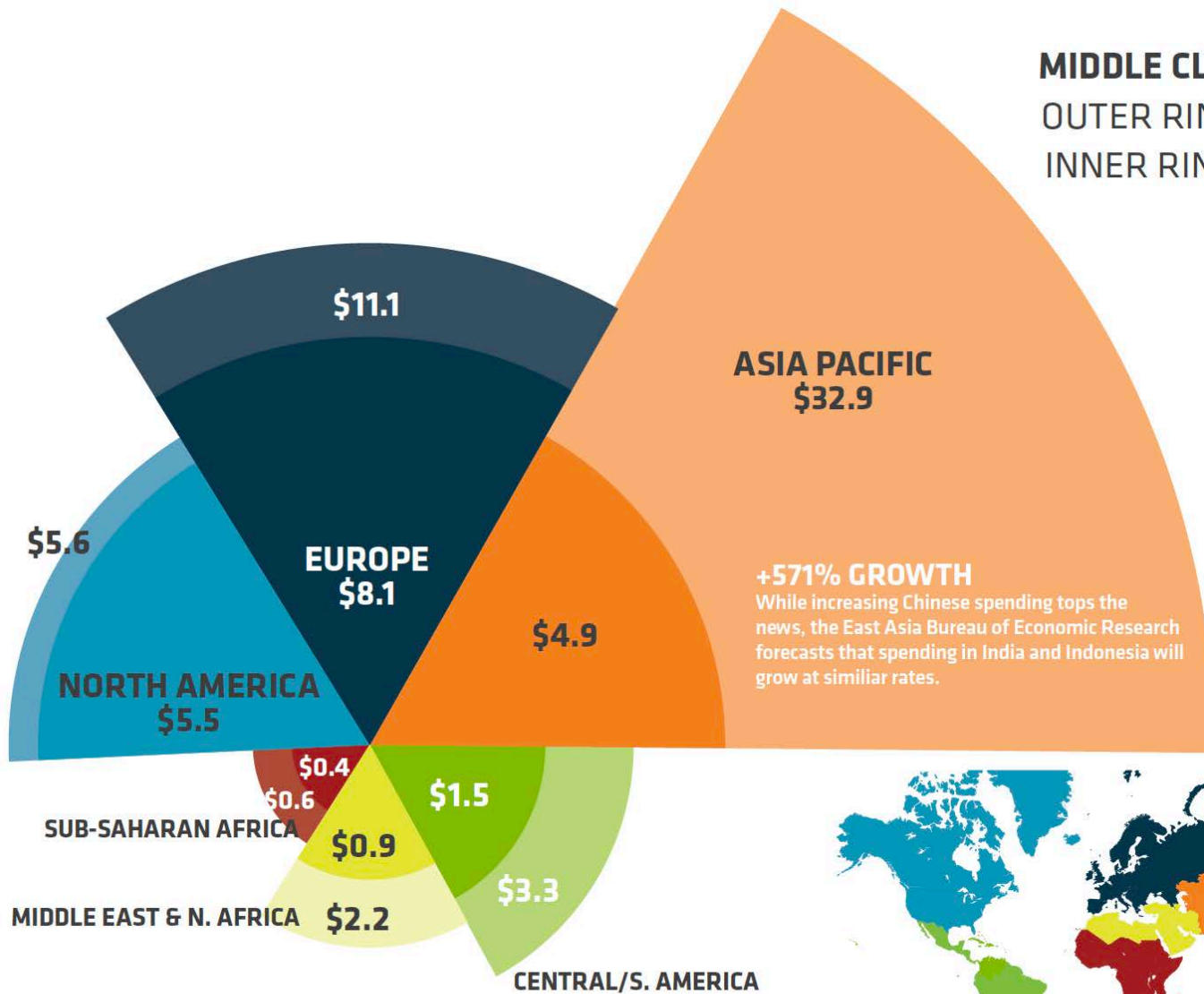
# We will build an entire New York City every month...

... for 40 years! The world's building stock  
will double by 2060.

## MIDDLE CLASS CONSUMER SPENDING

OUTER RING: 2030 IN TRILLIONS, USD

INNER RING: 2009 IN TRILLIONS, USD



Source: Kou, L. 2013. The world's middle class will number 5 billion by 2030. Quartz.  
Figures based on OECD, 2012. An emerging middle class.



## Built Environment is a Direct Reflection of the Underlying Economy



### Agriculture Economy

- 1<sup>st</sup> version of the American Dream
- “40 Acres and a Mule”



### Industrial Economy

- 2<sup>nd</sup> version of the American Dream
- Drivable Sub-urban... “See the USA in Your Chevrolet”



### Knowledge/Experience Economy

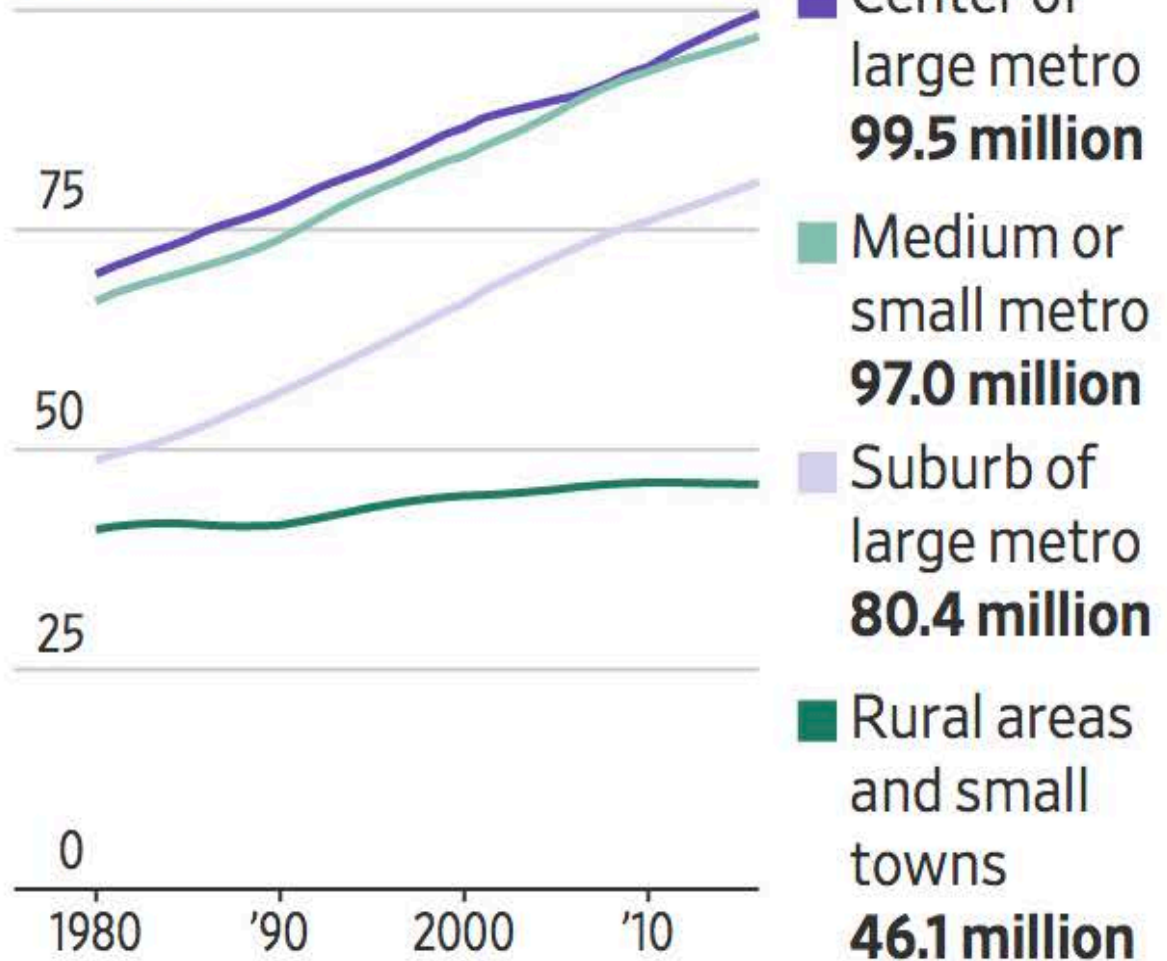
- Current/Future version of the American Dream
- *Option* of Walkable Urban and Drivable Sub-urban



# Changing distribution of American society

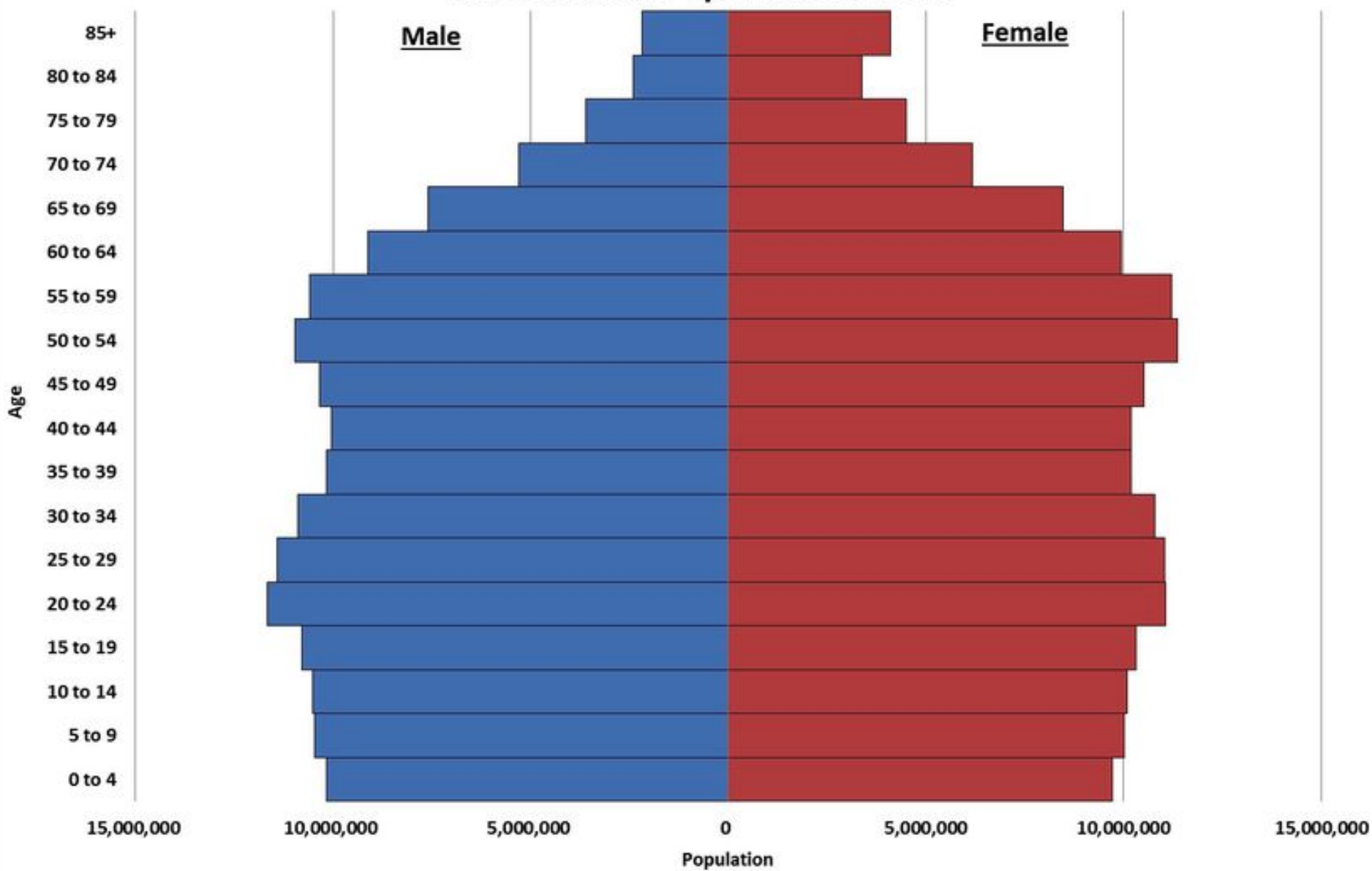
## Total U.S. population

100 million



Source: Census Bureau

**Chart 1: Population Pyramid of the U.S.  
Total Resident Population in 2015**



Source: U.S. Census Bureau, Vintage 2015 Population Estimates.

Boomers seeking communities that:

Have a village or town center with destinations and services close by

Have flexible office space in a town-center environment

Facilitate making new friends

Are low-maintenance



Baby Boomers seeking active lifestyles, more interaction  
Boomers have made "third places" like Starbucks, Barnes and Noble, and Borders their "community center"

National Association of Realtors, Smart Growth America, 2004.  
Robert Charles Lesser Company.





connectivity

HIGHER



MORE walkable areas



- 41% - plan to rent for at least 3 years.
- 77% - plan to live in urban walkable area.

2/3

say that living in a walk able community is important

1/3

will pay more to walk to shops, work, and entertainment

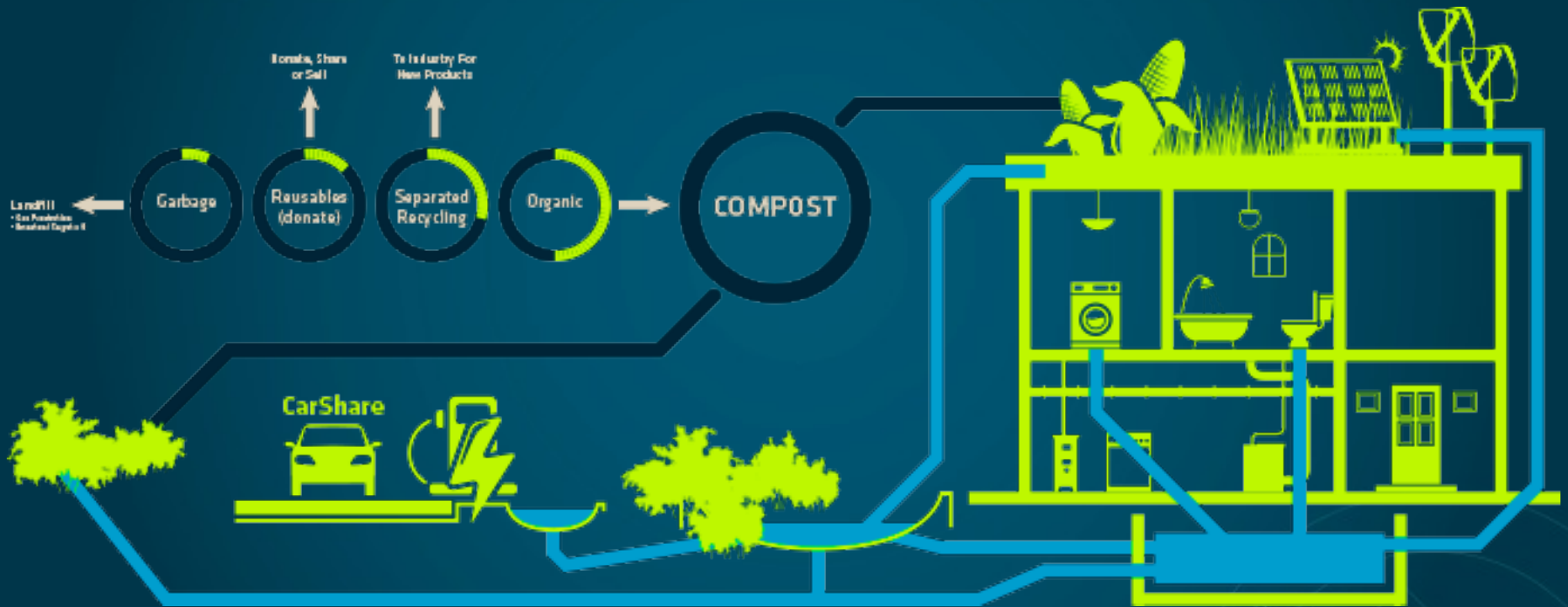
Gen Y will shift toward homeownership in 2012

Gen Y seeks diversity, walk ability, and proximity to jobs

In-town areas and inner suburbs will remain on an upward trajectory



# Closed loop and 'Cradle to cradle'



**CITIES OF THE FUTURE**  
ANTICIPATING TRENDS AND POSSIBILITIES

# Changing patterns in urban living and shopping (Neighborhood and community)

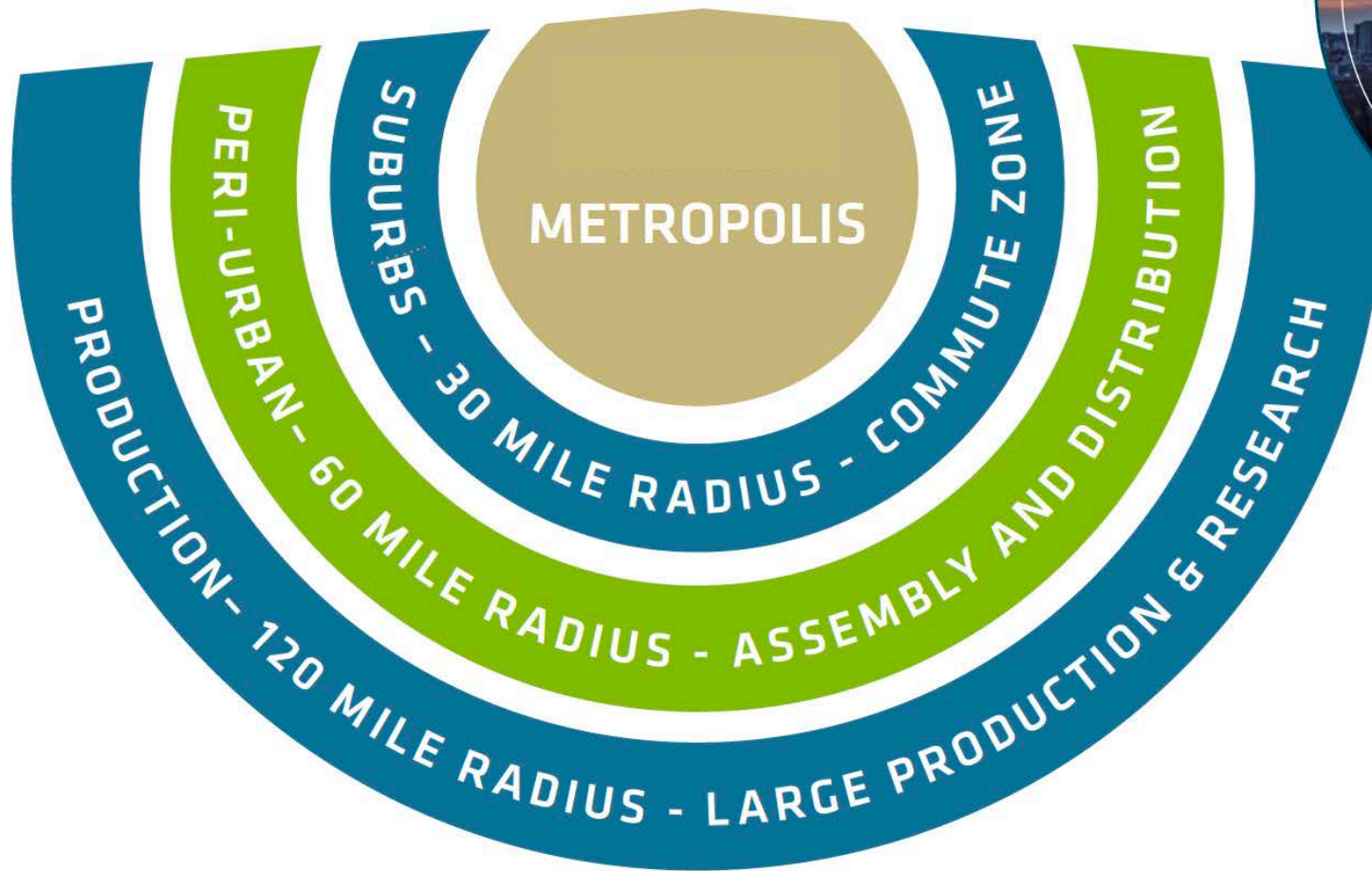


**CITIES OF THE FUTURE**  
ANTICIPATING TRENDS AND POSSIBILITIES

# Integrated (and shared) transport and utilities systems *(and autonomous vehicles)*



**CITIES OF THE FUTURE**  
ANTICIPATING TRENDS AND POSSIBILITIES





# Demographics, Population, Mass Urbanization

- Increasing global population
- People are living longer
- Global surge in younger cohorts
- Greater urbanization and mega cities
- Changing societal values
- Society is reconfiguring around urban hubs

# **Demographics, Population, Mass Urbanization**

## **What does this mean for Smithville?**



# Energy + Water + Climate Change + Food

future→iQ

Create Future Intelligence™

**60%**  
**INCREASED DEMAND BY 2050**

**FOOD**

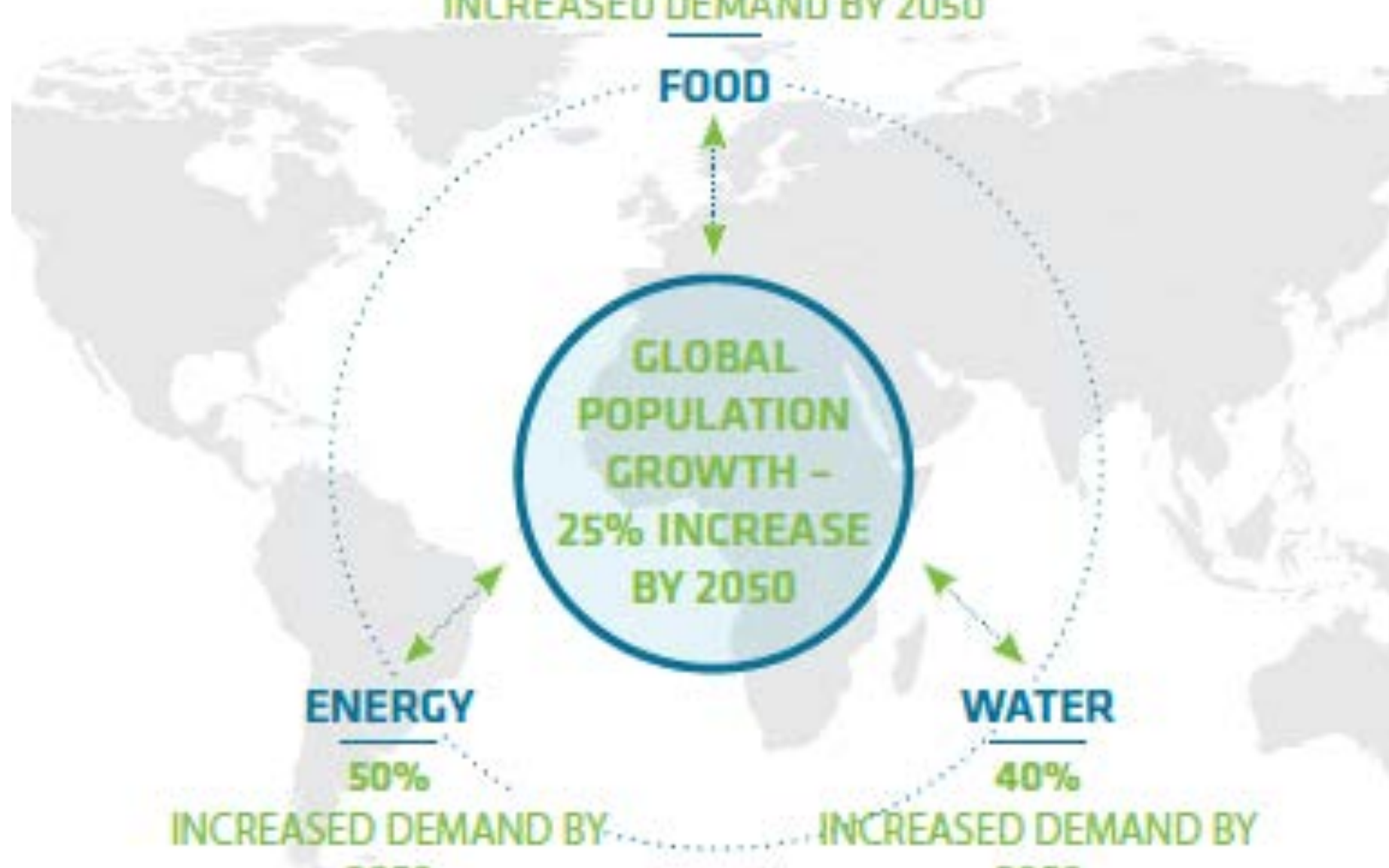
**GLOBAL  
POPULATION  
GROWTH -  
25% INCREASE  
BY 2050**

**ENERGY**

**50%**  
**INCREASED DEMAND BY  
2050**

**WATER**

**40%**  
**INCREASED DEMAND BY  
2050**



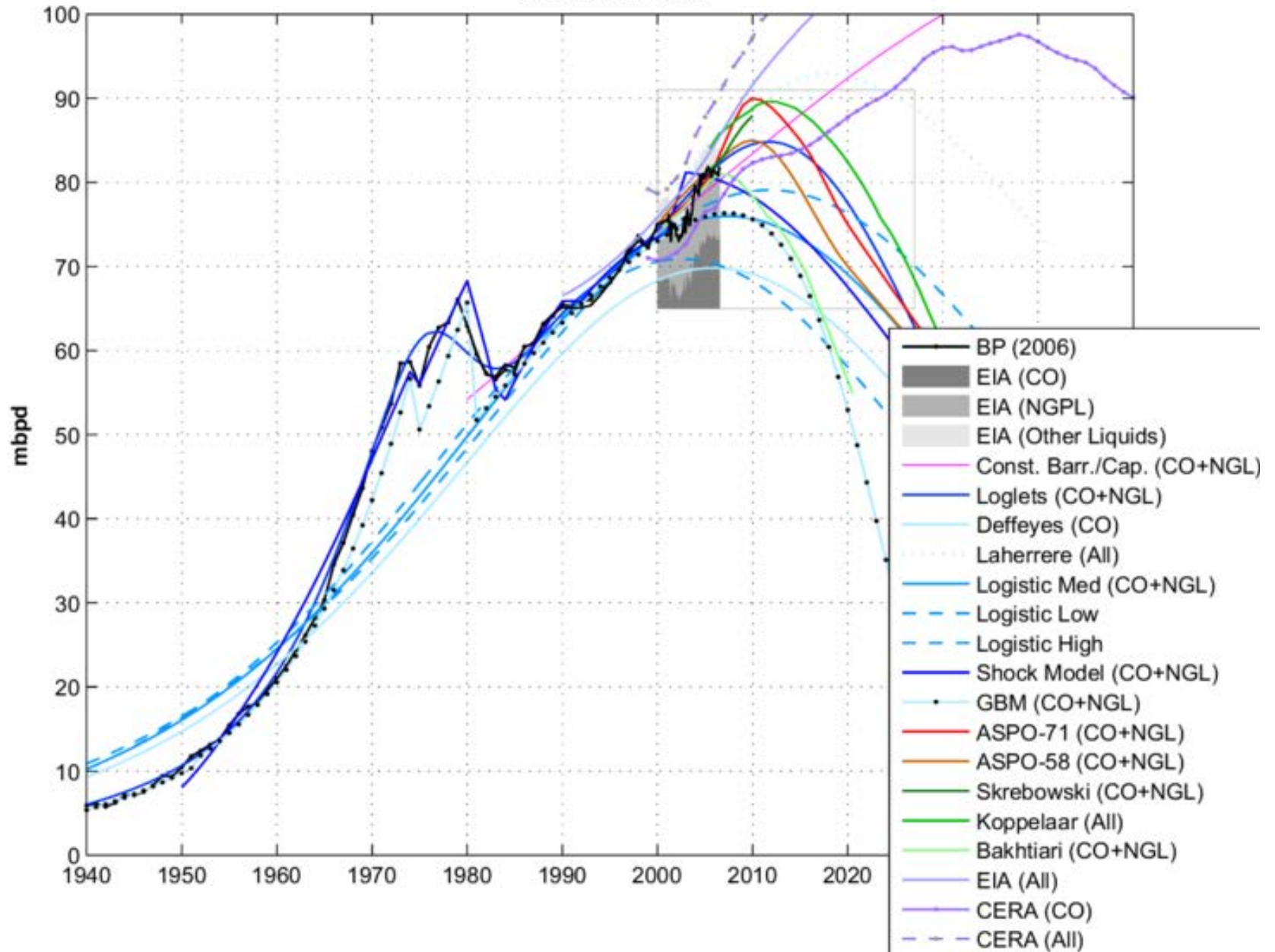


# Energy

- At present 2.5 billion people rely on burning wood and animal dung as their chief source of energy
- 1.5 billion people have no electricity of any kind.



### World Production



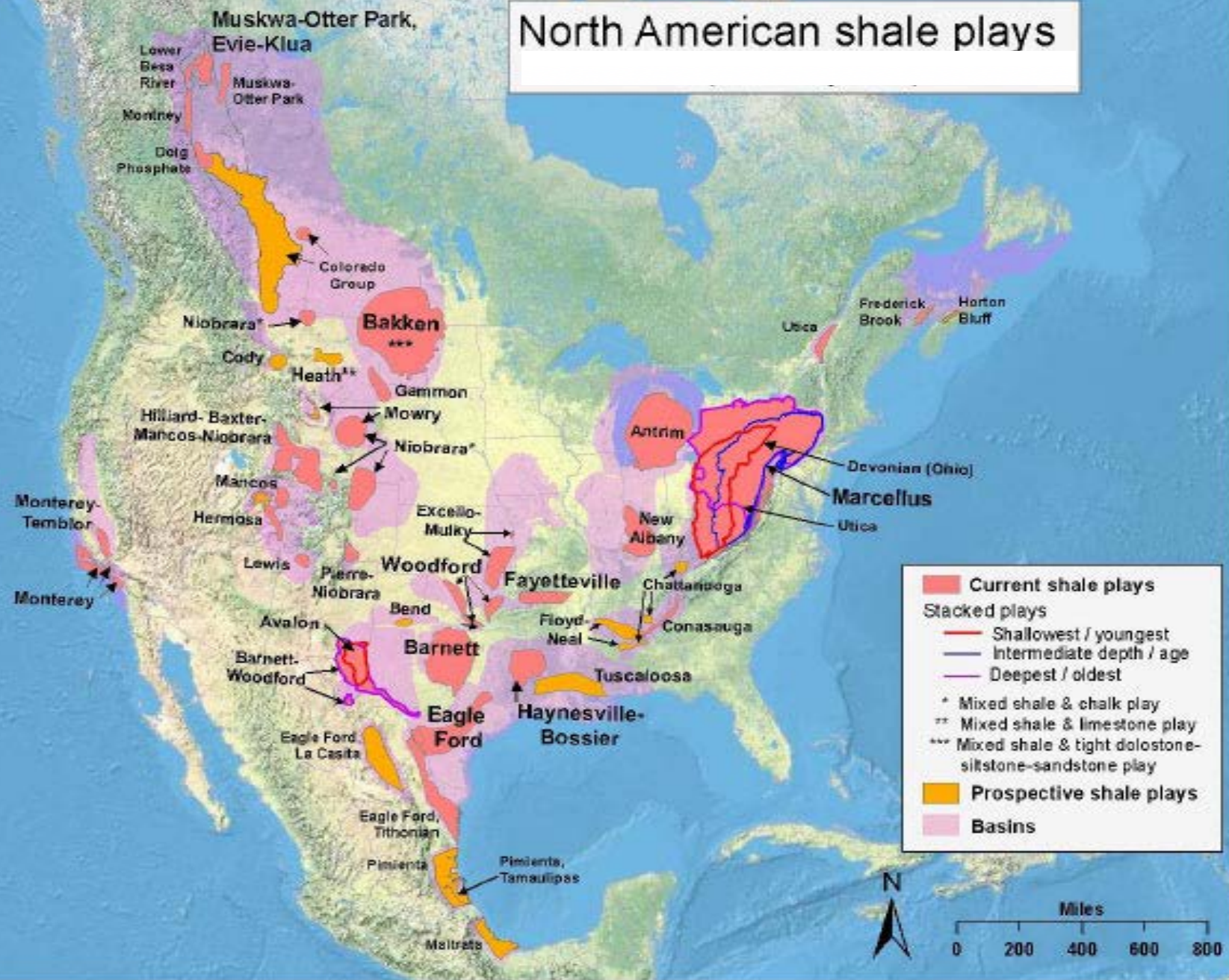
# BLACK GOLD OIL SHALE



**ROCKS THAT BURN**  
**FUEL OF THE FUTURE!**  
CONTENTS: 384 CALORIES OF ENERGY



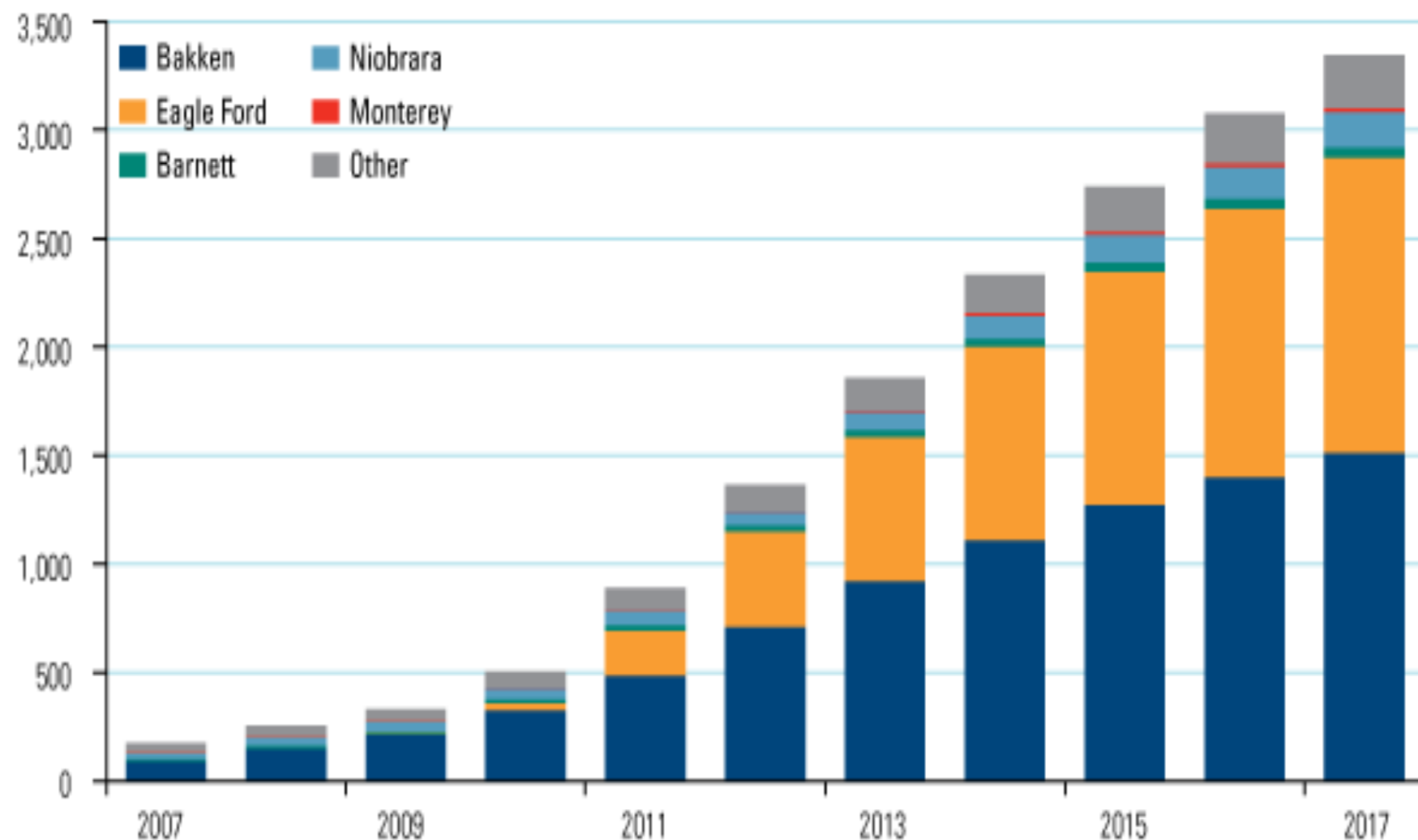
# North American shale plays





## U.S. Shale Oil Production Growing

Thousand barrels per day

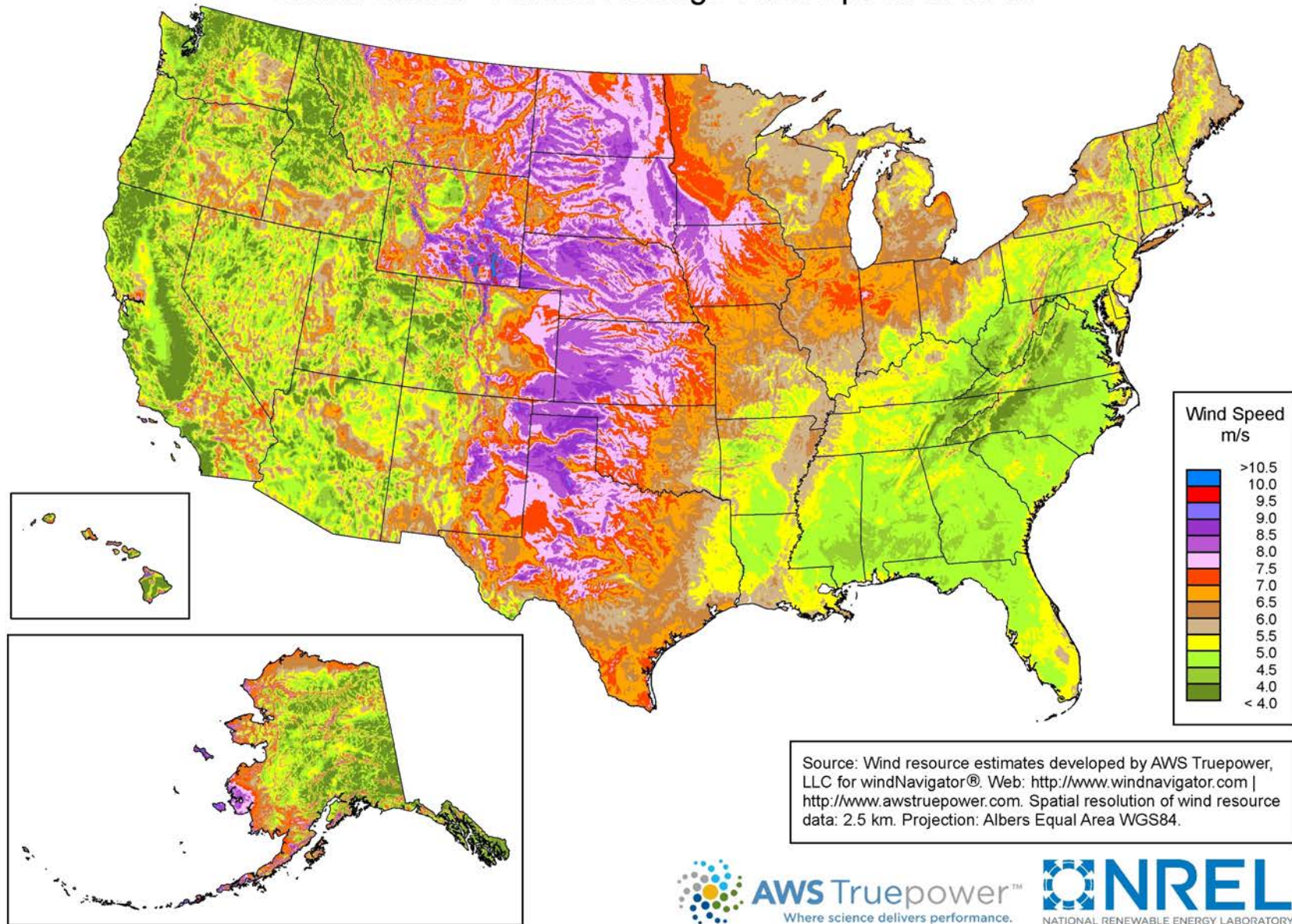


Source: Woodmac, IEA, EIA, Reuters, company reports, BofA Merrill Lynch Global Commodities Research

# Renewable Energy

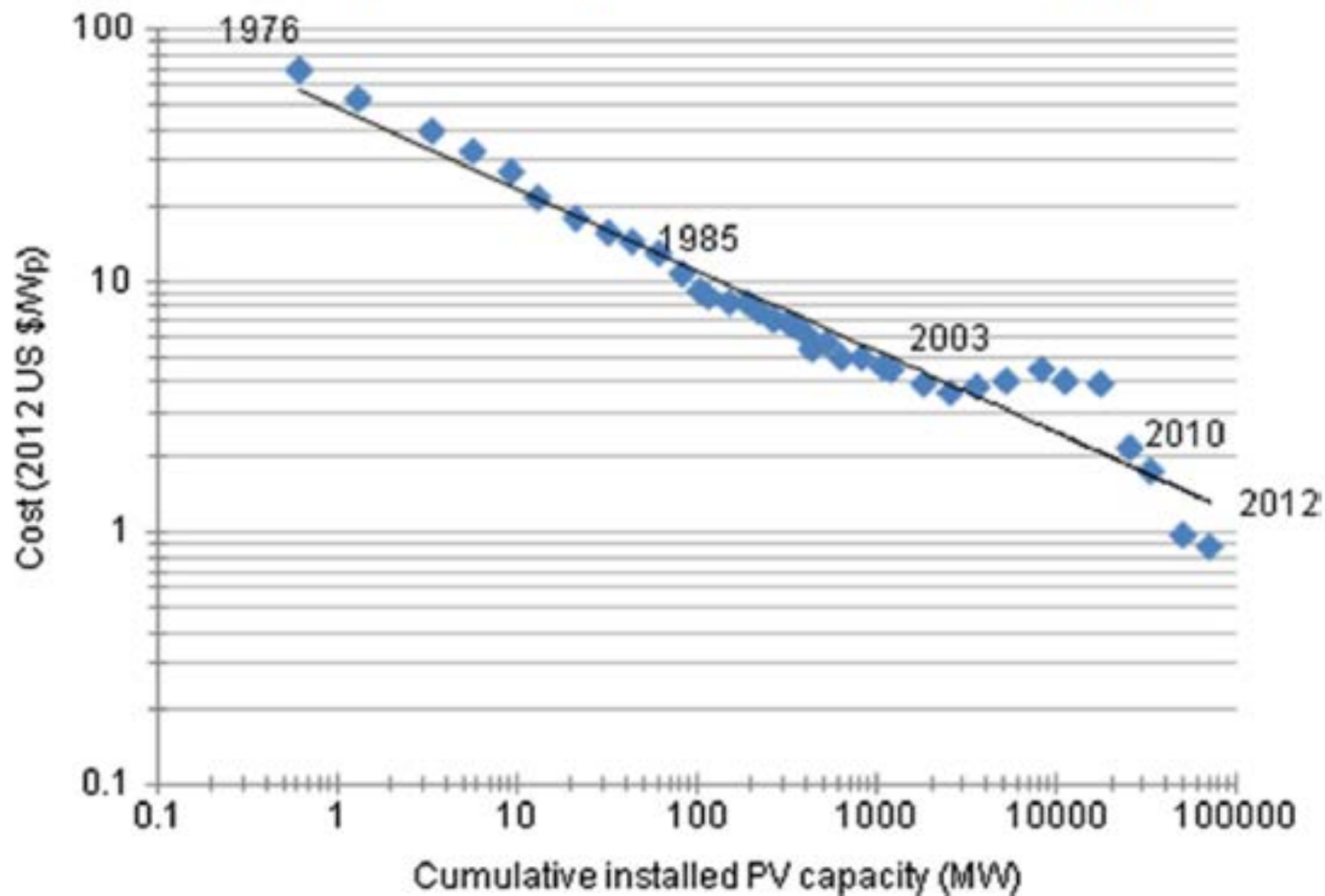


## United States - Annual Average Wind Speed at 80 m

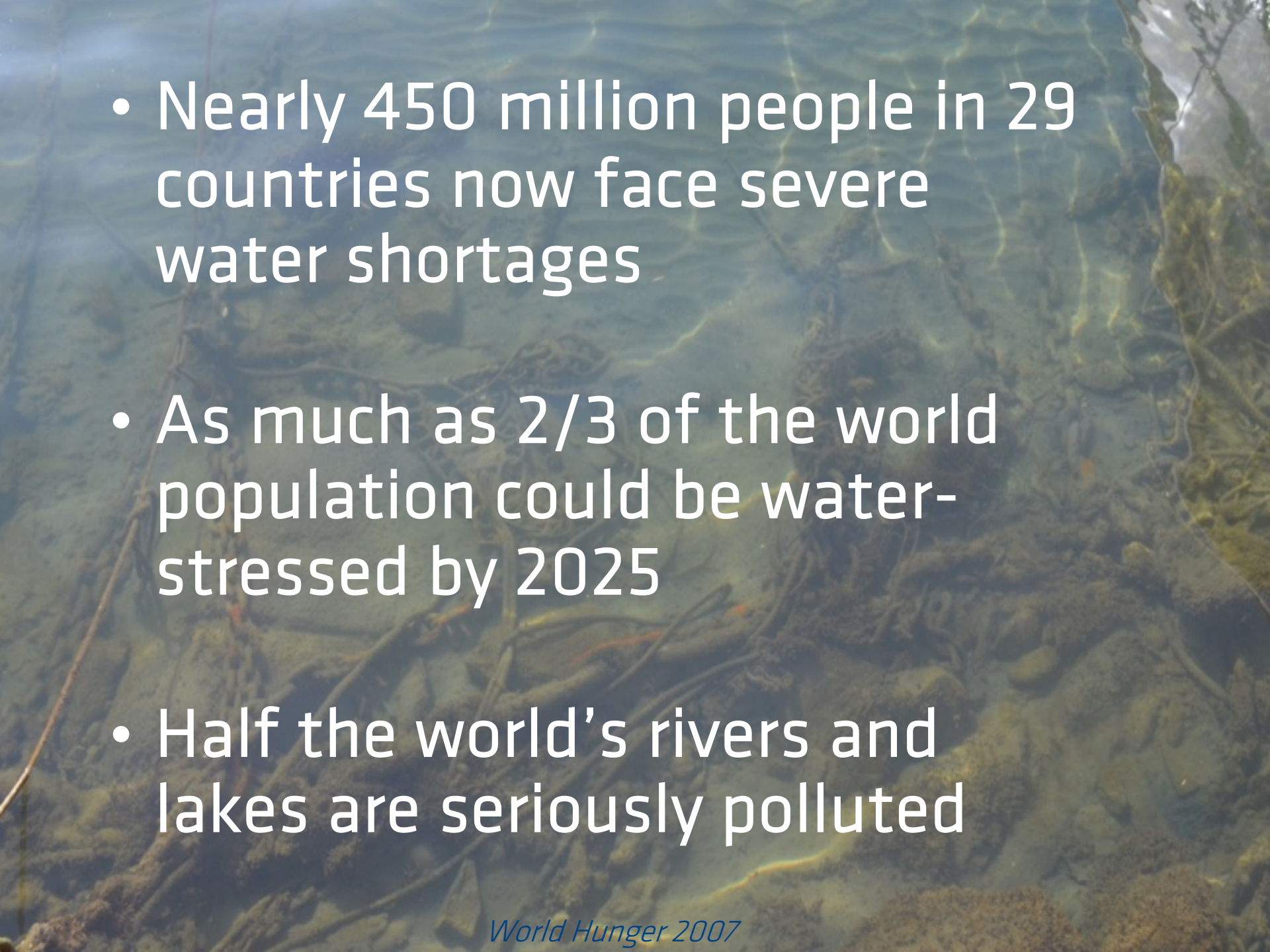




# Solar, blueprint of energy





- 
- The background of the slide is an underwater photograph of a riverbed. The water is clear, revealing a rocky bottom with various sized stones and pebbles. There are some thin, brown sticks or branches lying on the riverbed. The lighting is natural, coming from above, creating some ripples and reflections on the water surface.
- Nearly 450 million people in 29 countries now face severe water shortages
  - As much as 2/3 of the world population could be water-stressed by 2025
  - Half the world's rivers and lakes are seriously polluted

# WATER RESOURCES

- Irrigation uses 70% of the world's fresh water
- Water scarcity, not lack of arable land, will be the chief constraint to increased food production
- The threat to water resources stands as one of the major crises facing the planet

*(World Hunger)*

**Midwest has 20% of global  
fresh water resources**







## Food Demand

The relative growth of **staple grains** required by 2050 is approximately 46%, while **animal protein** growth is 76%

*Rural Industries Research and Development Corporation (RIRDC) report, Rural Industry Futures: megatrends impacting Australian agriculture over the coming twenty years.*



**2 BILLION**

PEOPLE DON'T GET ENOUGH VITAMINS AND MINERALS

**795 MILLION**

PEOPLE DON'T GET ENOUGH CALORIES

**161 MILLION**

CHILDREN ARE CHRONICALLY UNDERNOURISHED

WE HAVE A BIG PROBLEM WITH  
**UNDERNUTRITION**

WE HAVE A BIG PROBLEM WITH  
**OVERWEIGHT & OBESITY**

**1.9 BILLION**

ADULTS ARE OVERWEIGHT OR OBESE

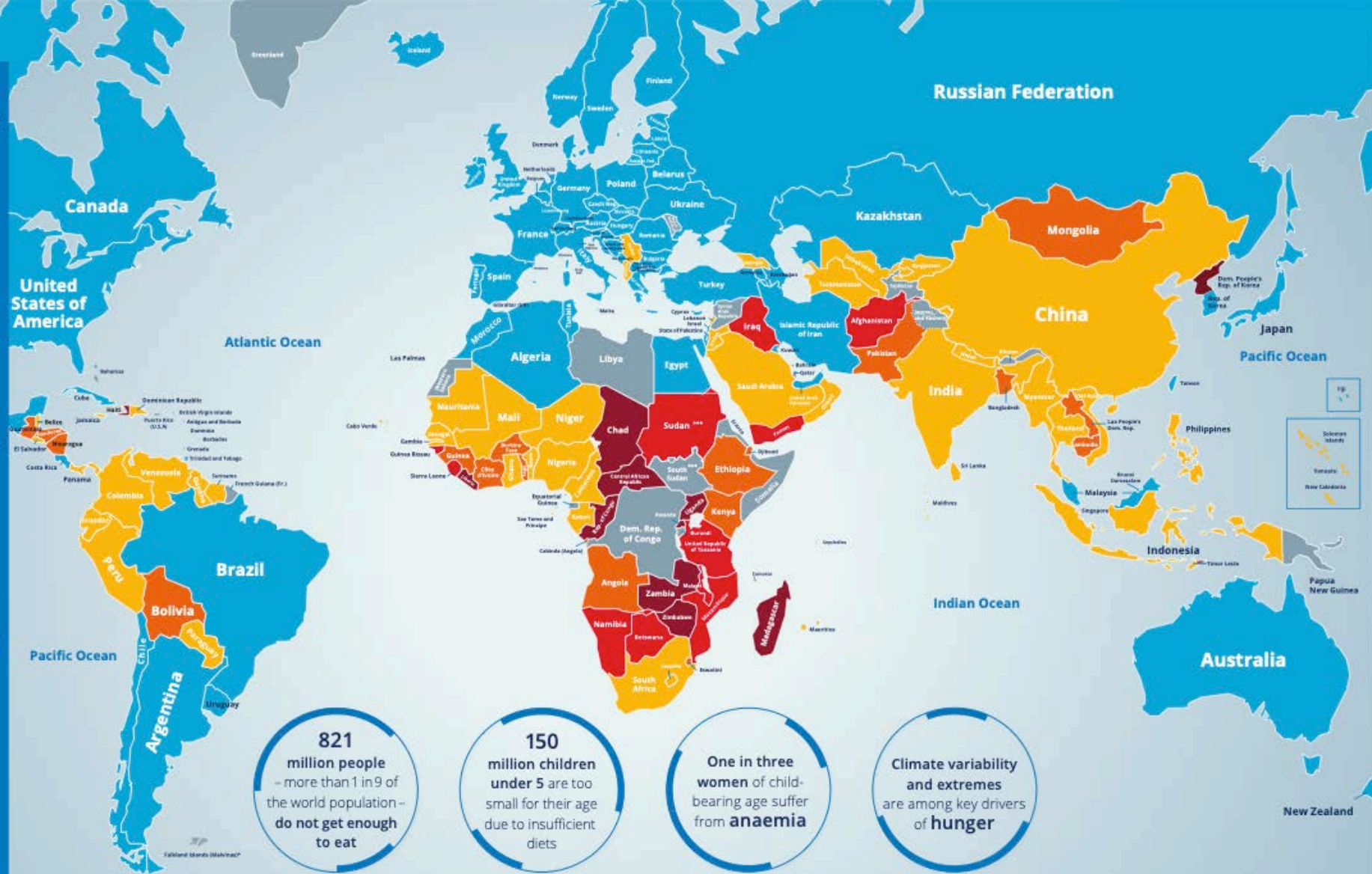
**1 in 12**

ADULTS HAVE DIABETES

**42 MILLION**

CHILDREN ARE OVERWEIGHT





**PREVALENCE OF UNDERNOURISHMENT IN THE TOTAL POPULATION (PERCENT) IN 2015-17**



Undernourishment is defined as the condition in which an individual's habitual food consumption is insufficient to provide the amount of dietary energy required to maintain a normal, active, healthy life. The indicator is reported as the prevalence of undernourishment (PNU), which is an estimate of the percentage of individuals in the total population that are in a condition of undernourishment. To reduce the influence of possible estimation errors in some of the underlying assumptions, national estimates are reported as a three-year moving average.  
Source: FAO, UN, UNICEF, WFP and WHO, 2016. The State of Food Security and Nutrition in the World 2016. Building climate resilience for food security and nutrition. Rome, FAO.  
Further information is available at [www.wfp.org/publications/2016/state-of-food-security-and-nutrition-in-the-world-2016](http://www.wfp.org/publications/2016/state-of-food-security-and-nutrition-in-the-world-2016)

© 2018 World Food Programme

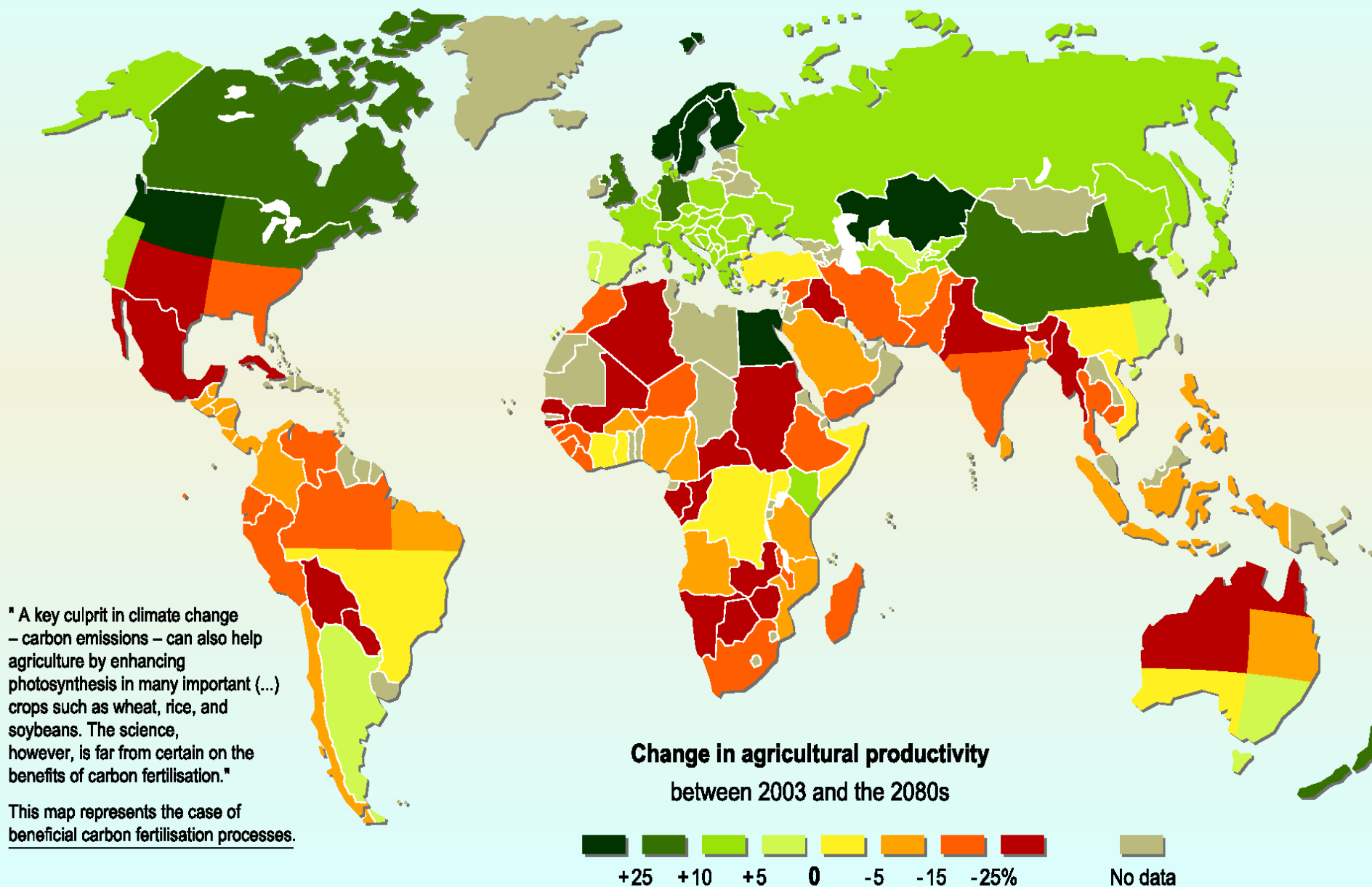
The designations employed and the presentation of material in this map do not imply the expression of any opinion whatsoever on the part of WFP concerning the legal or constitutional status of any country, territory or sea area or concerning the delimitation of frontiers.

\* A dispute exists between the Government of Argentina and the United Kingdom of Great Britain and Northern Ireland concerning sovereignty over the Falkland Islands (Malvinas).

\*\* Except where represented approximately by the line of Control of Government and where agreed upon by both sides. The final status of Jerusalem and occupied East Jerusalem has not yet been agreed upon by the parties.

\*\*\* Final boundary between the Republic of Sudan and the Republic of South Sudan has not yet been determined.

# Projected impact of climate change on agricultural yields





FISHERIES YIELDS  
IN THE TROPICS

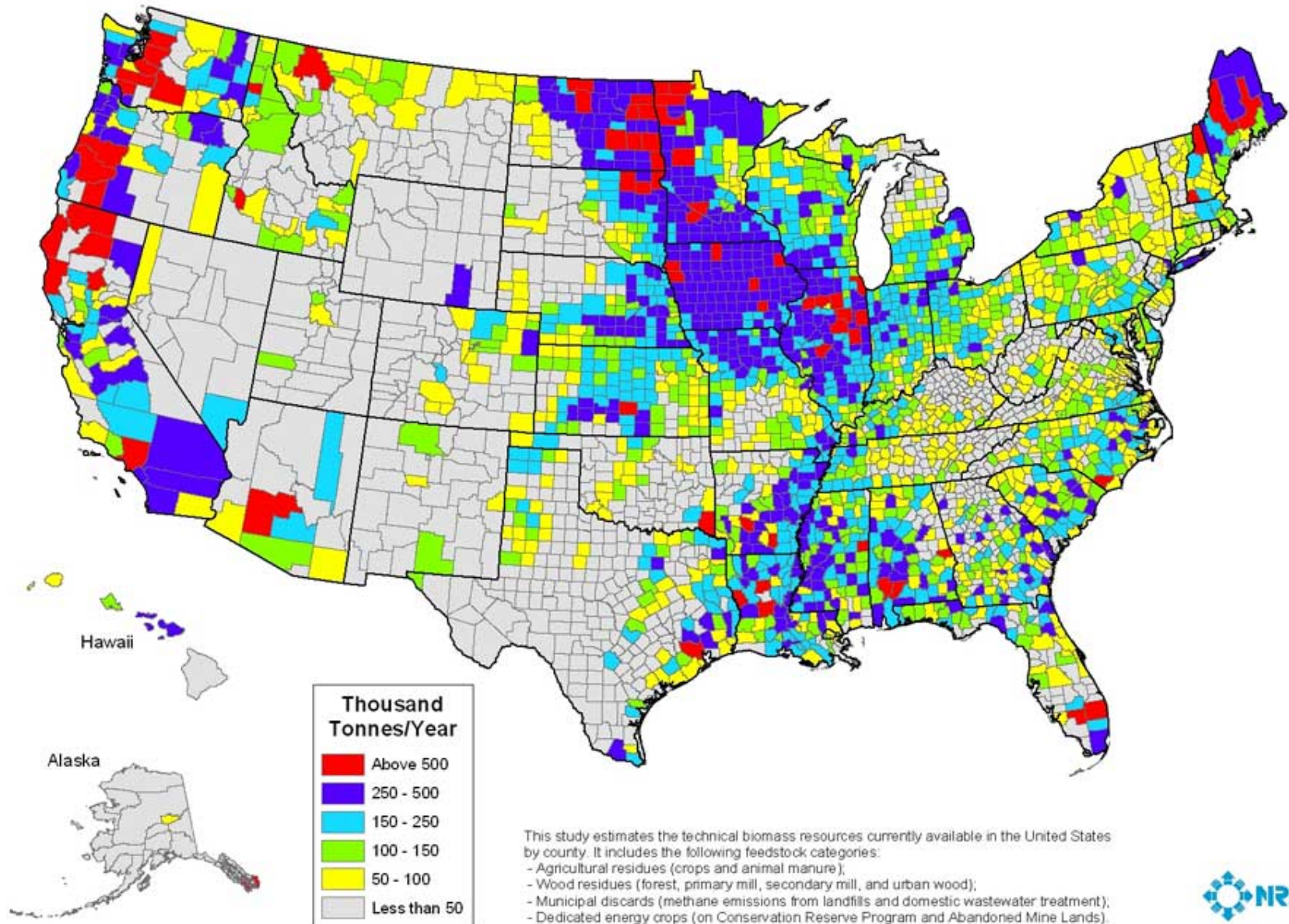


FISHERIES YIELDS  
IN HIGH LATITUDES





## Biomass Resources Available in the United States



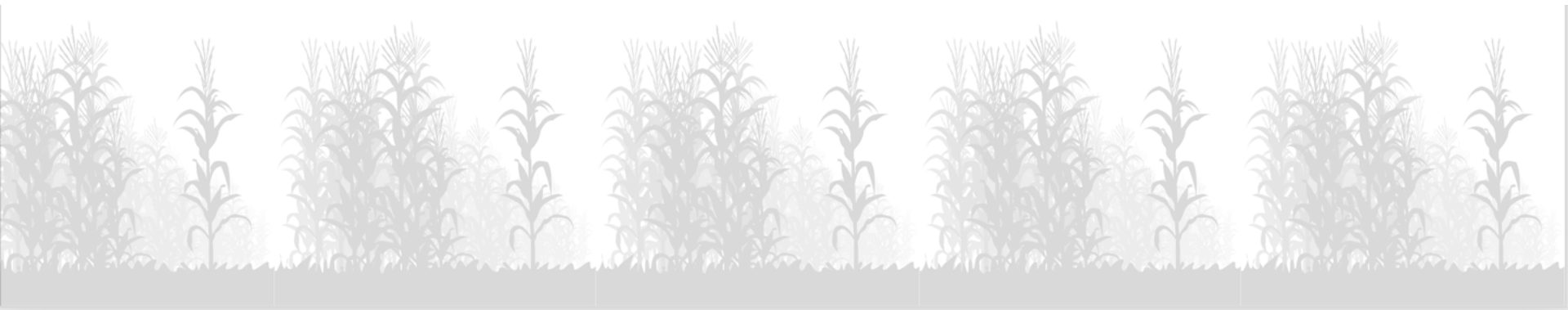


# Energy + Water + Climate Change + Food

- Challenges with finite resource base and unique Midwest resource combination
- Potential for unexpected trends
- Global disconnect between where food can be grown, and where it will be consumed

**Energy + Water + Food + Changing Climate**

**What does this mean for  
Smithville?**



# Technology – driving and enabling accelerated change





# Technology – a catalyst for change



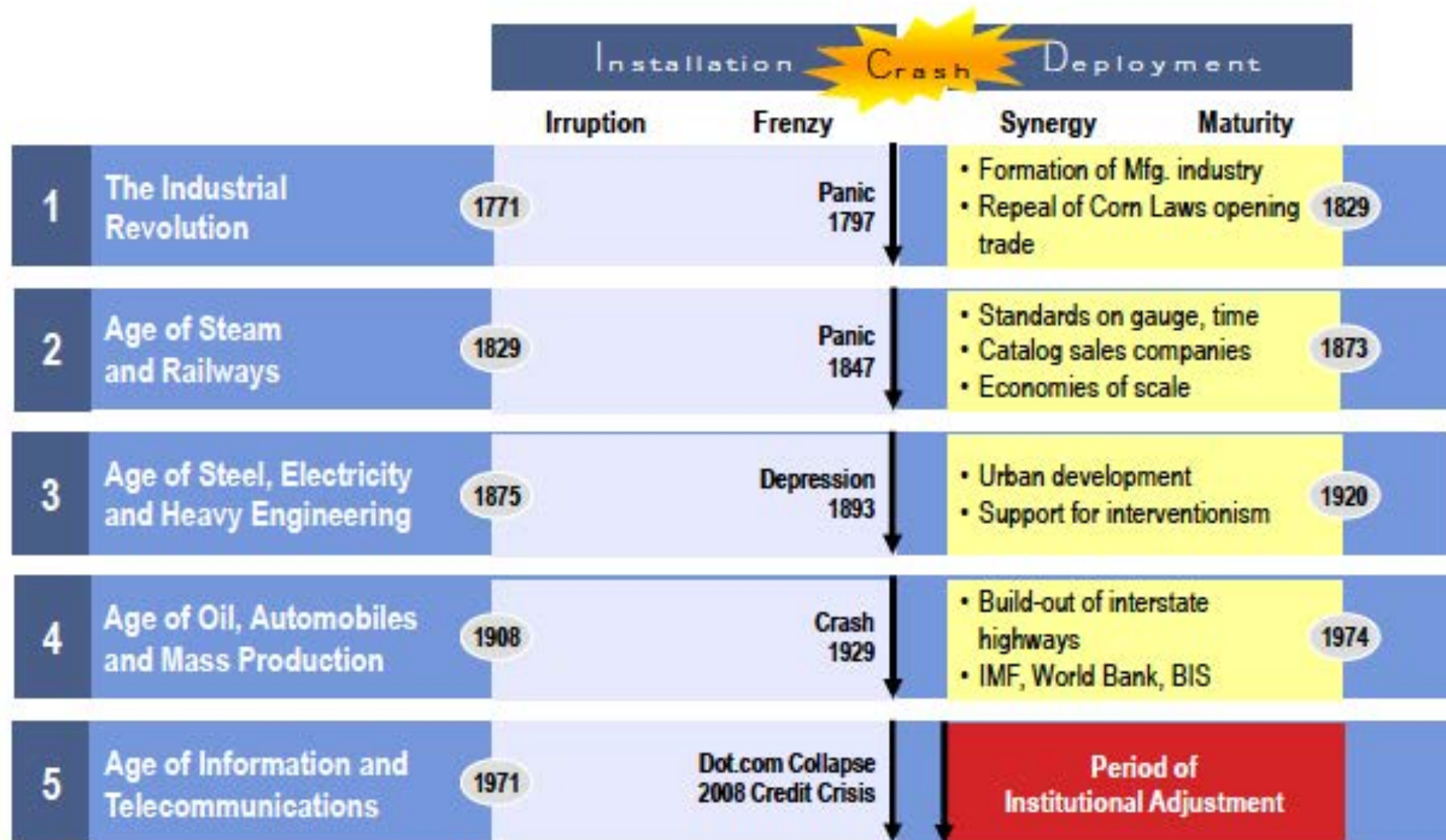
**An analysis of the history of  
technology shows that technological  
change is exponential**

**Imagine the last 100 years of  
technological change and the  
impacts on our lives**

**The next 100 years of progress  
in the 21st century.....**

**will be more like 20,000 years  
of progress  
(at today's rate)**

# Five Technological Revolutions in 240 yrs

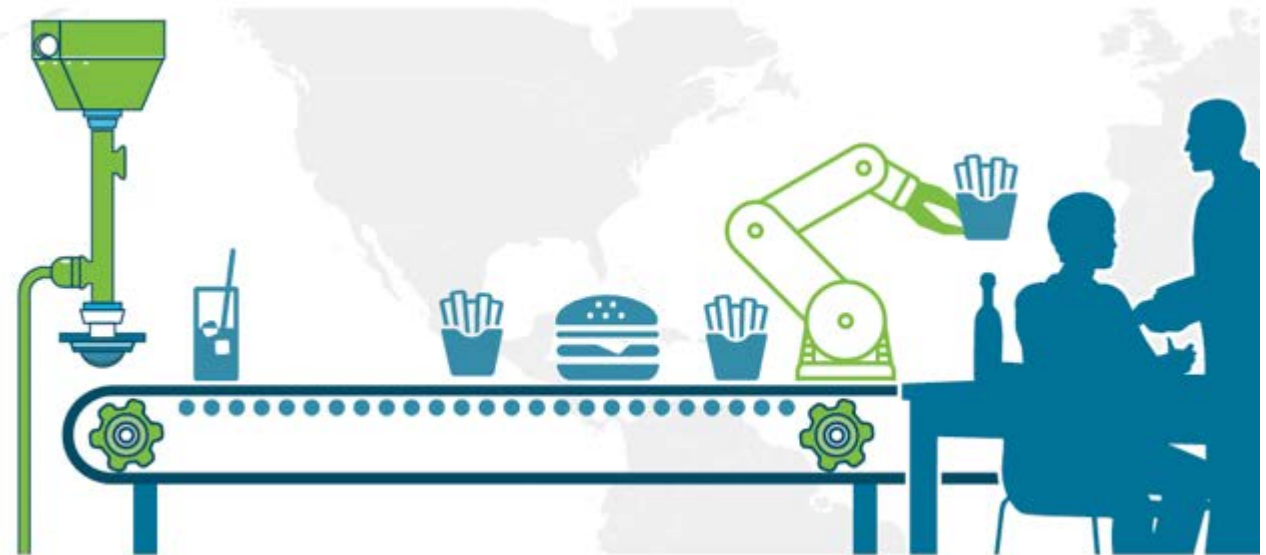


Source: Perez, C., "Technological Revolutions and Financial Capital", 2002



# Preparing for the Next Industrial Revolution

Advanced Manufacturing, Robotics and Life Sciences



# Technology impact – ‘Mining of the future’



Remote operations centre; mines thousands of kilometers away



# What makes this industrial revolution different?

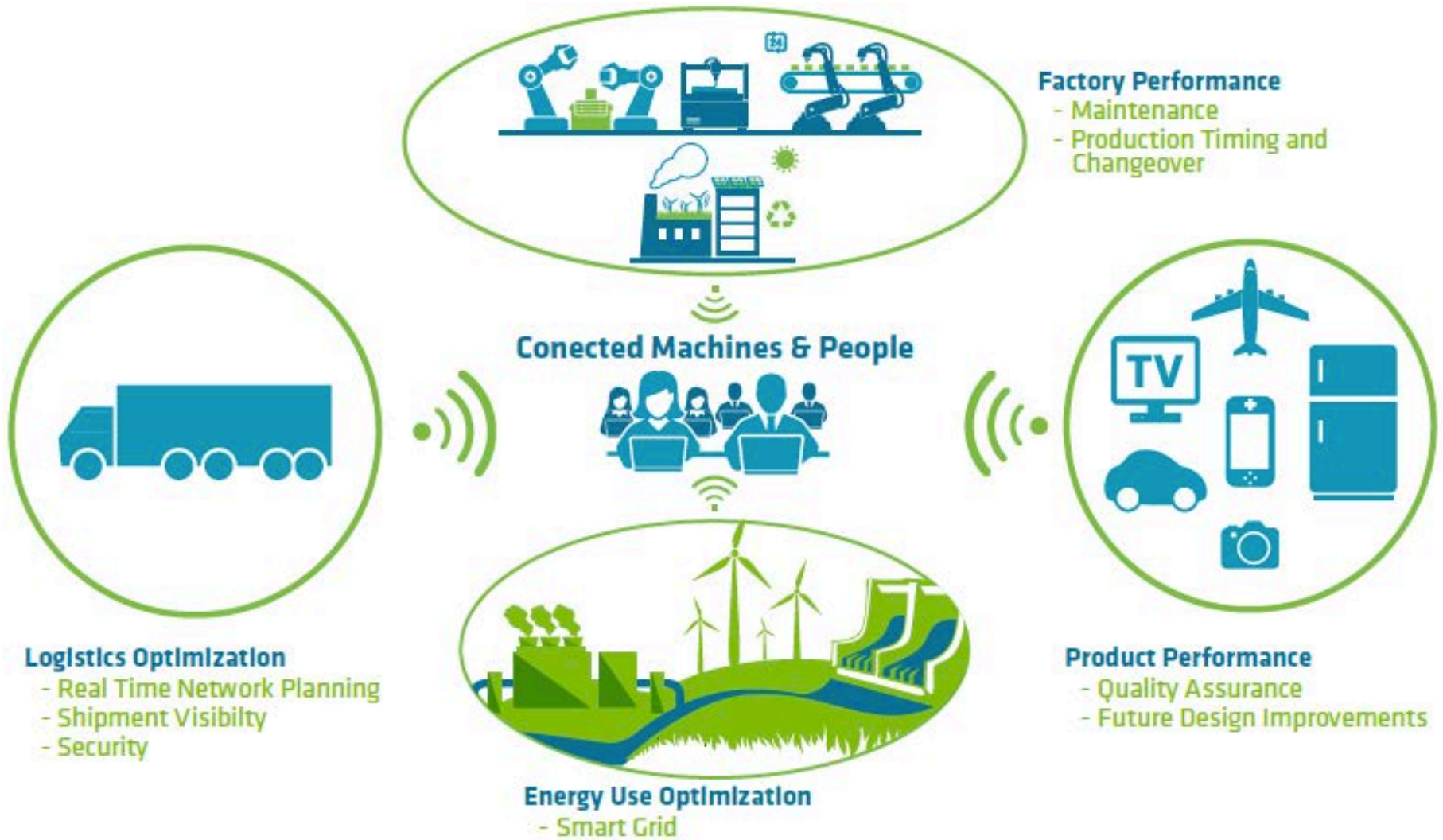


- Machine learning / Artificial Intelligence
- Converging technologies
- Exponential impacts





# Industrial 'Internet of things'



**By 2020 – between 25 and 100 billion things will be connected to the internet**

## Technological Development

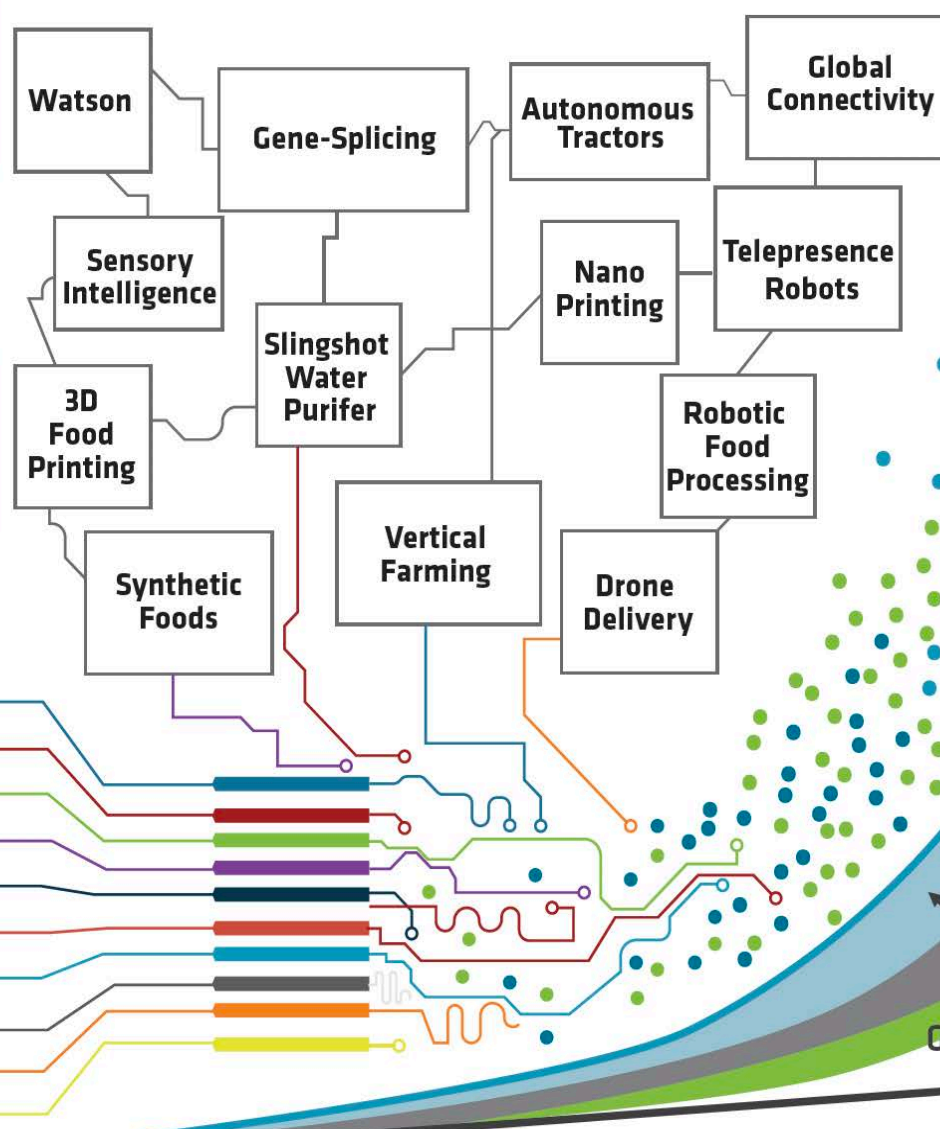
Moore's Law: The power of chips, bandwidth and computer doubles appr. every 18 months.

## The Human Factor

Technological dev. feeds and enables various trends in society: Democratisation, Social Connection, DIY, Decentralisation.

EXPONENTIAL TECHNOLOGIES

Biotech  
Neurotech  
Nanotech  
New Energy & Sustainability  
ICT & Mobile Technology  
Sensing  
3D Food Printing  
Artificial Intelligence  
Robotics  
Drones



FROM LINEAR  
TO EXPONENTIAL  
GROWTH TRAJECTORY

# Technology + Next Industrial Revolution

- Impacting every corner of our lives
- Capacity to radically disrupt systems
- Changes in where and how things will be made
- New materials and new products





**Technology - driving and enabling accelerated  
change**

**What does this mean for  
Smithville?**



**What internal trends are happening (or are emerging) that could be game-changers for the future of Smithville?**

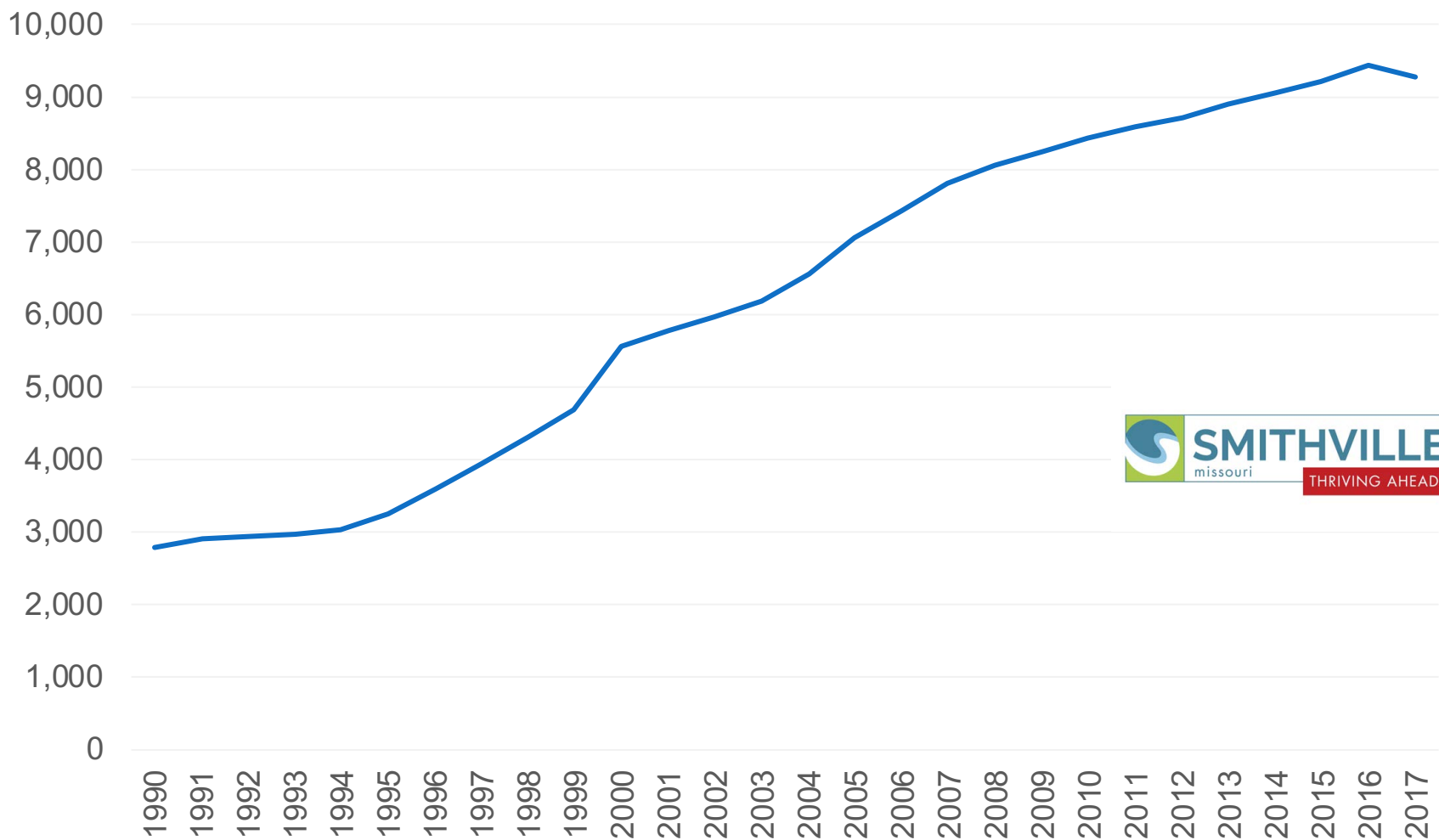


# Benchmark and Community Survey

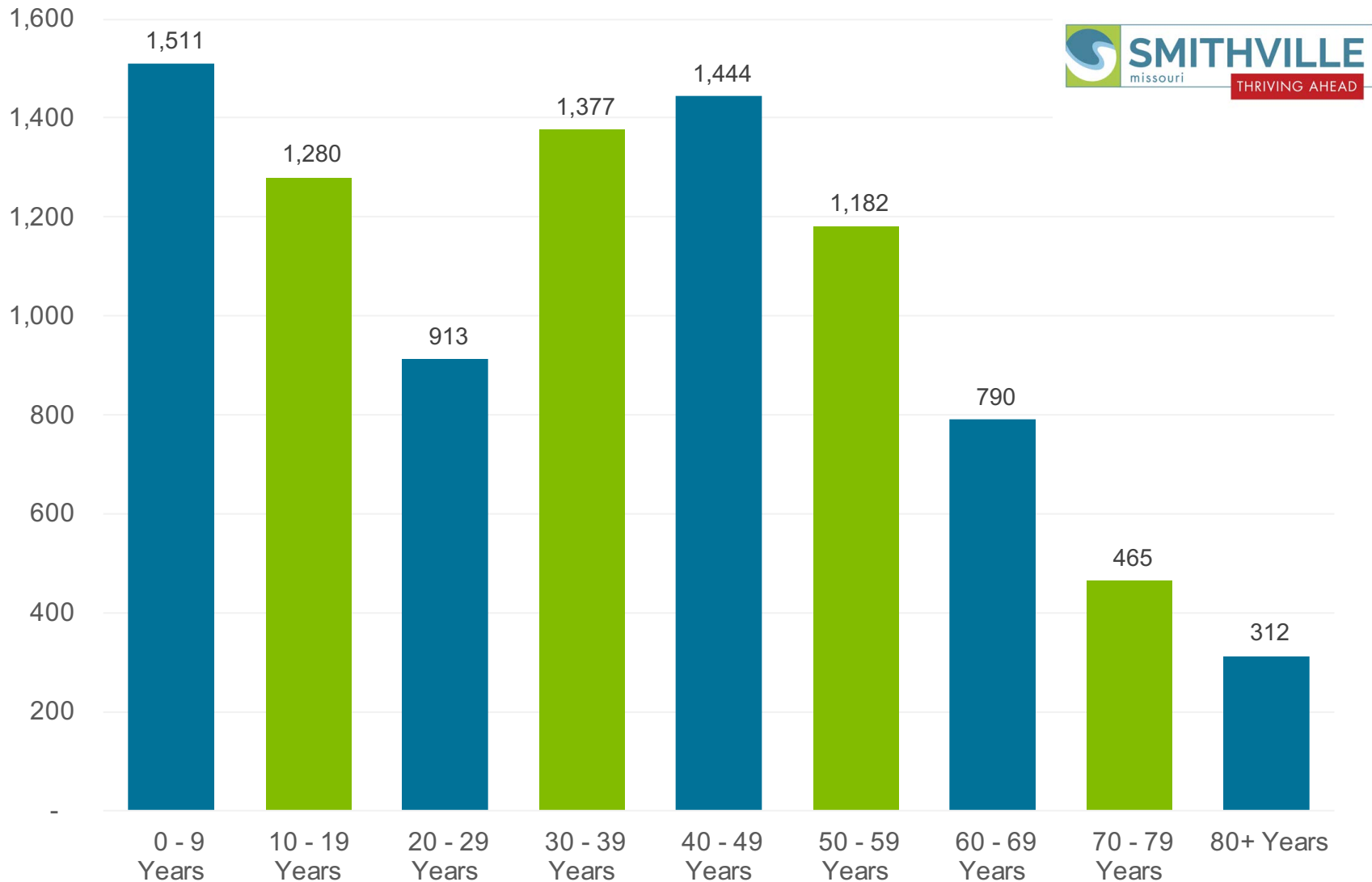




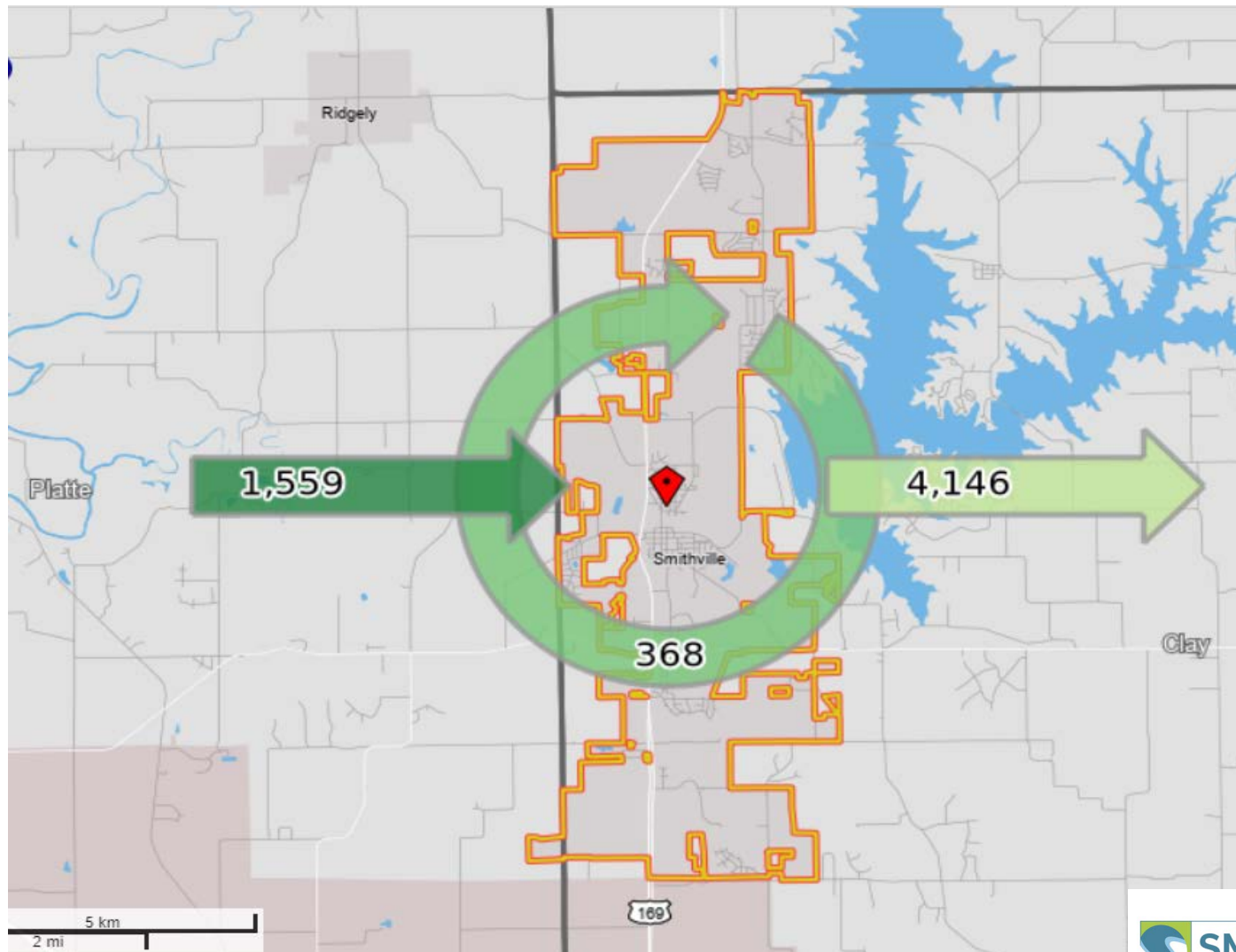
# Population change for City of Smithville, Missouri (1990 - 2017)



# Residents age profile for Smithville, 2017



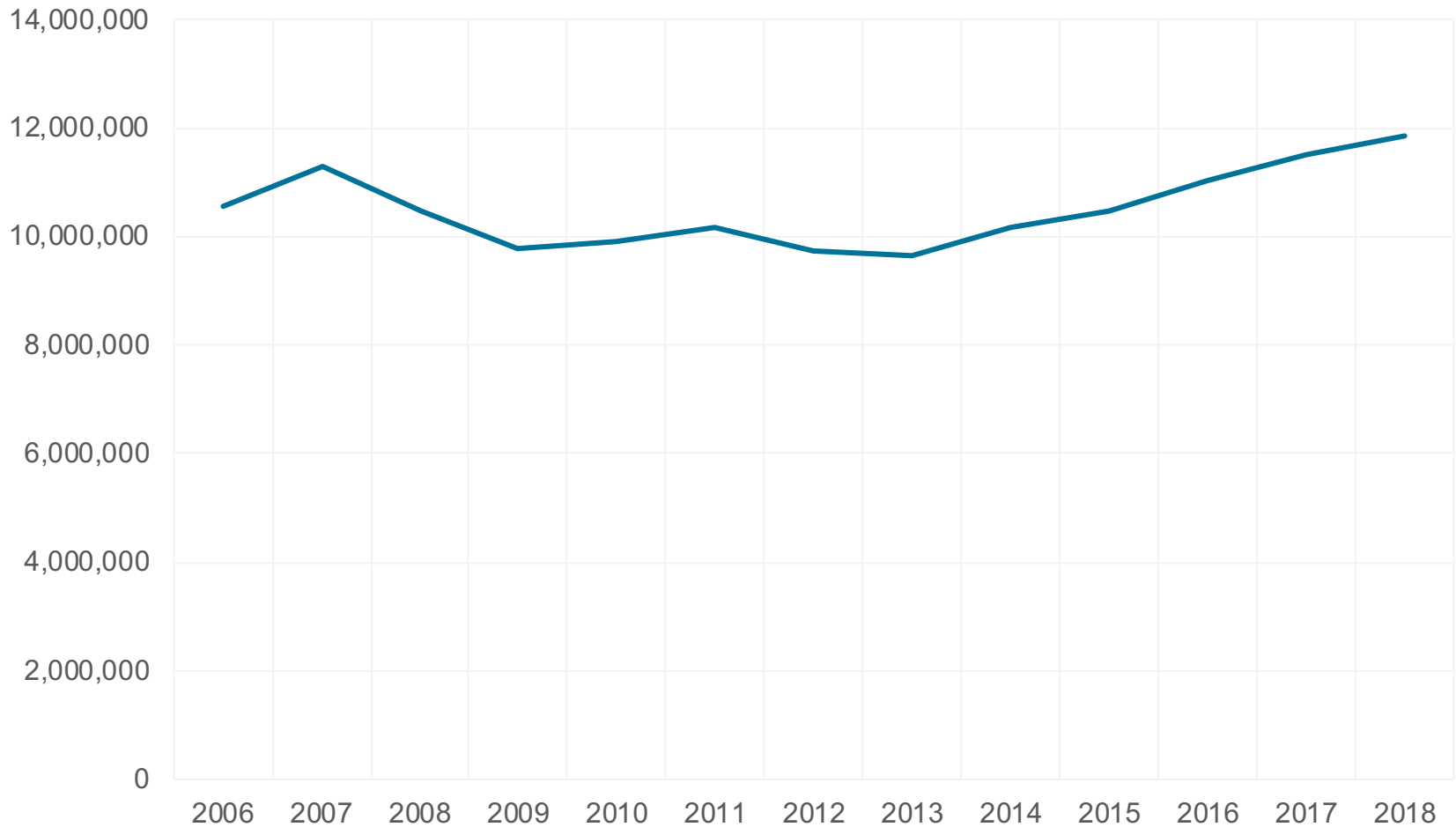
# Inflow and Outflow of commuters



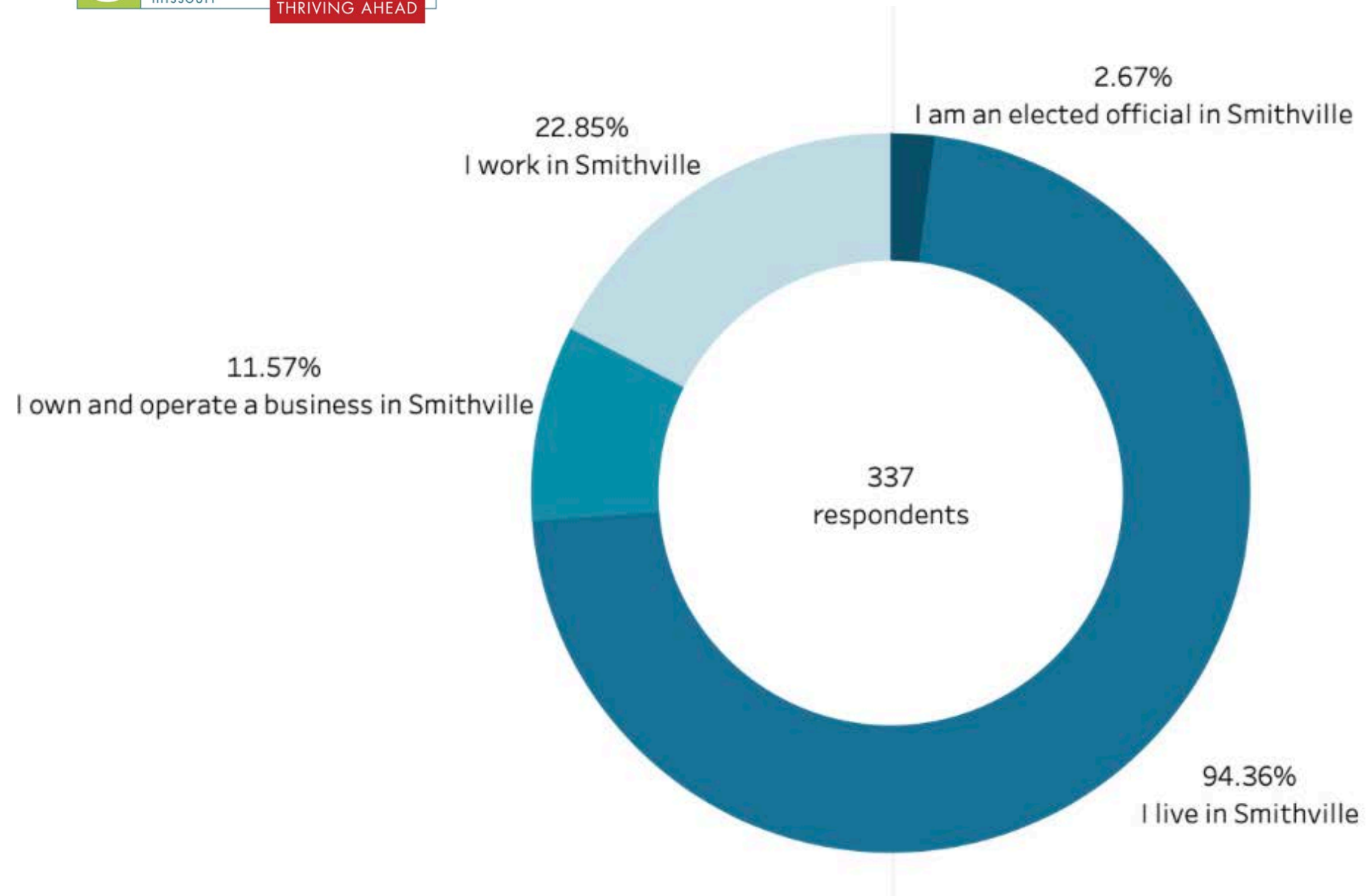
Source: 2015 Longitudinal Employer-Household Dynamics: <https://onthemap.ces.census.gov/>



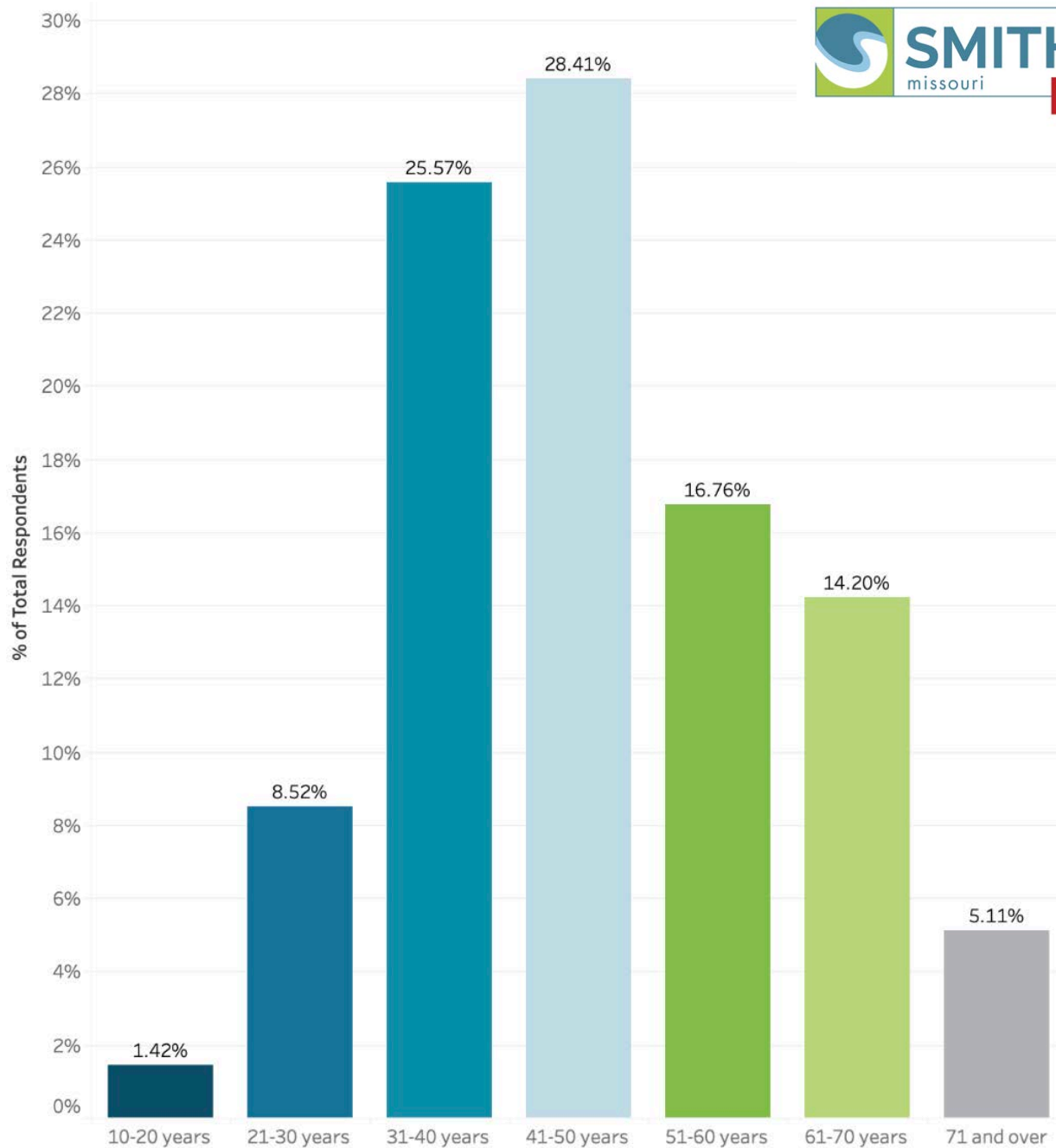
# Traffic data of Kansas International Airport (MCI) - Passengers per year



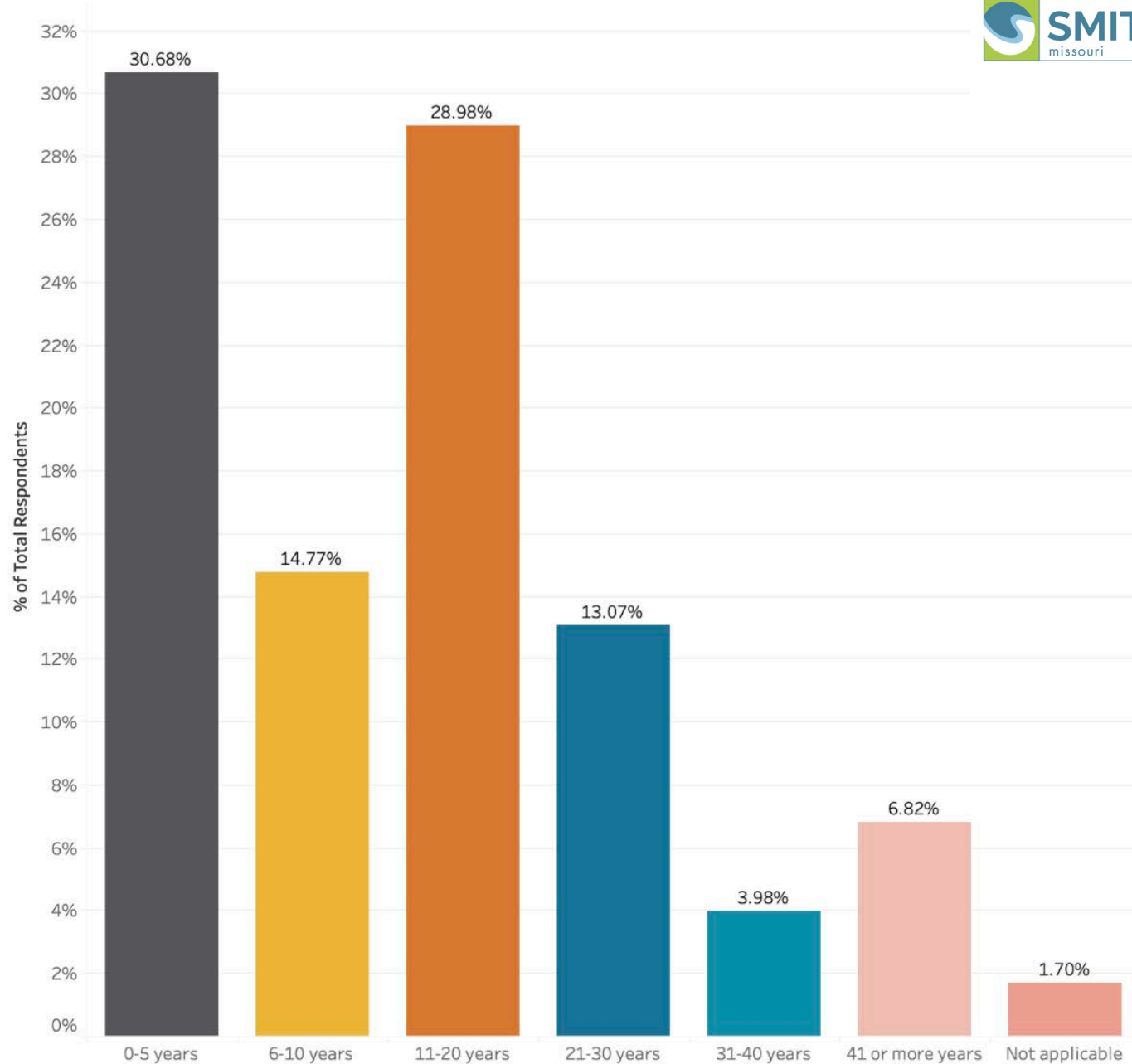
***Source: Kansas International Airport (MCI) Traffic Statistics***



## What is your age grouping?

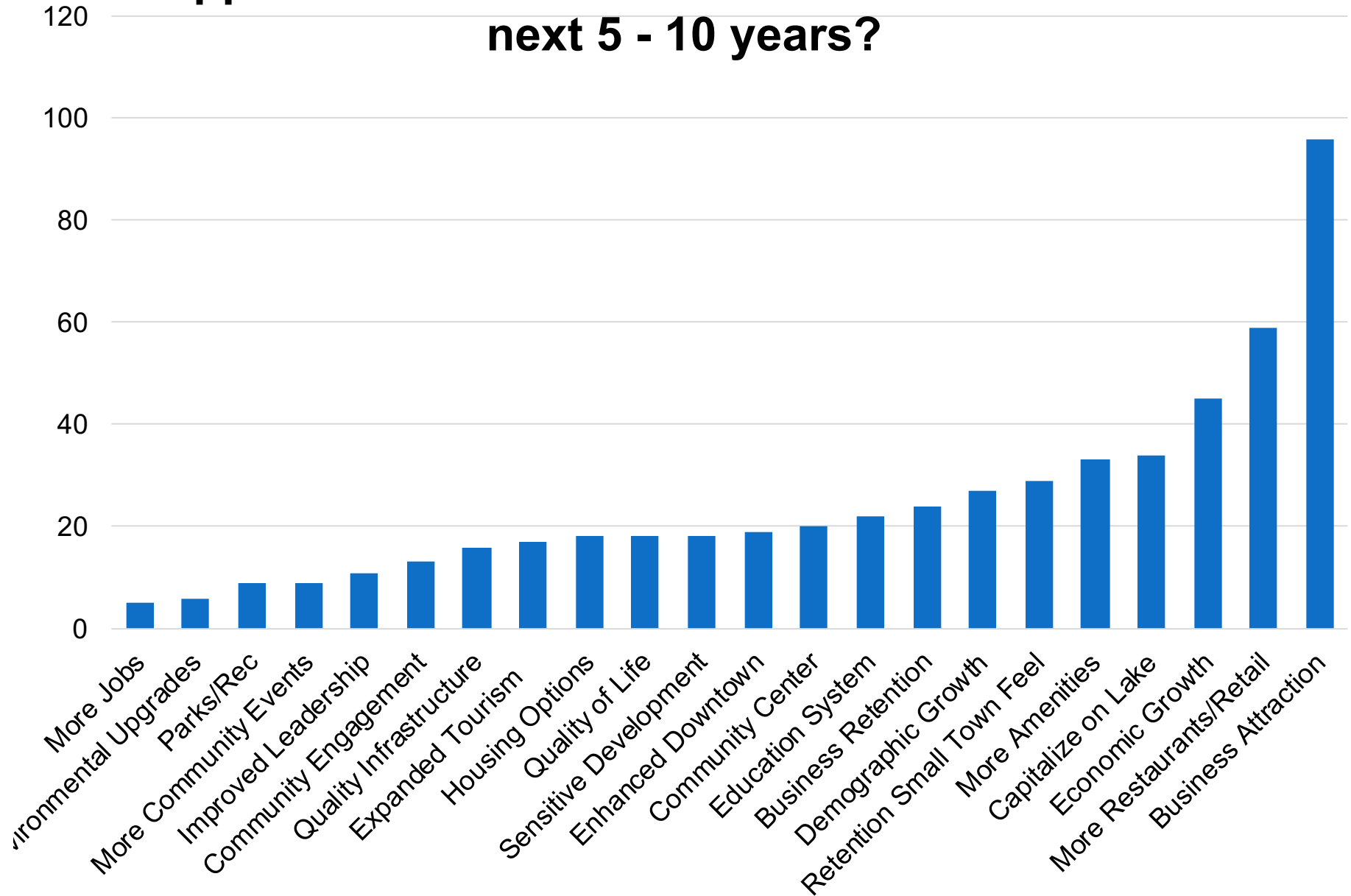


## How long have you lived or worked in Smithville?

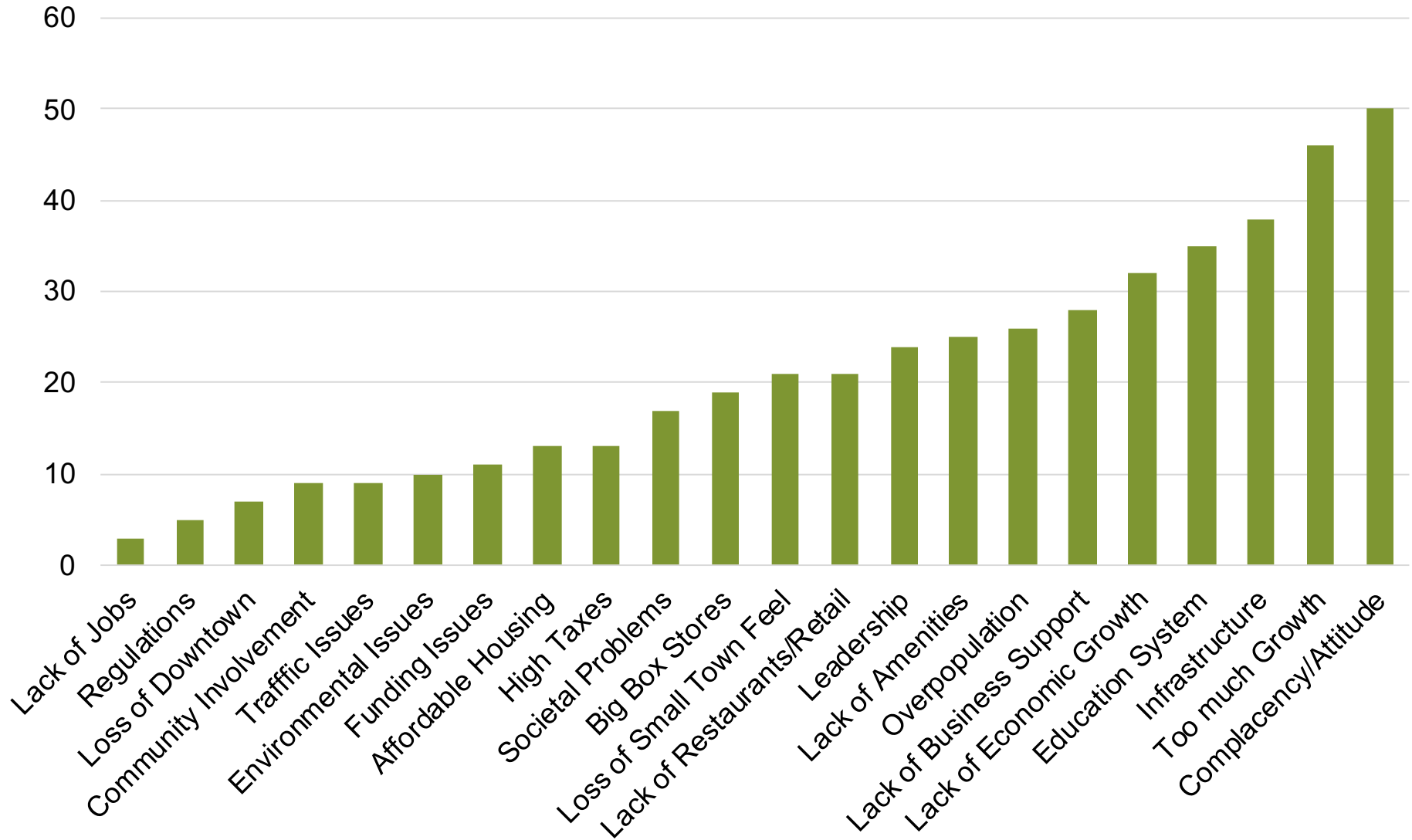




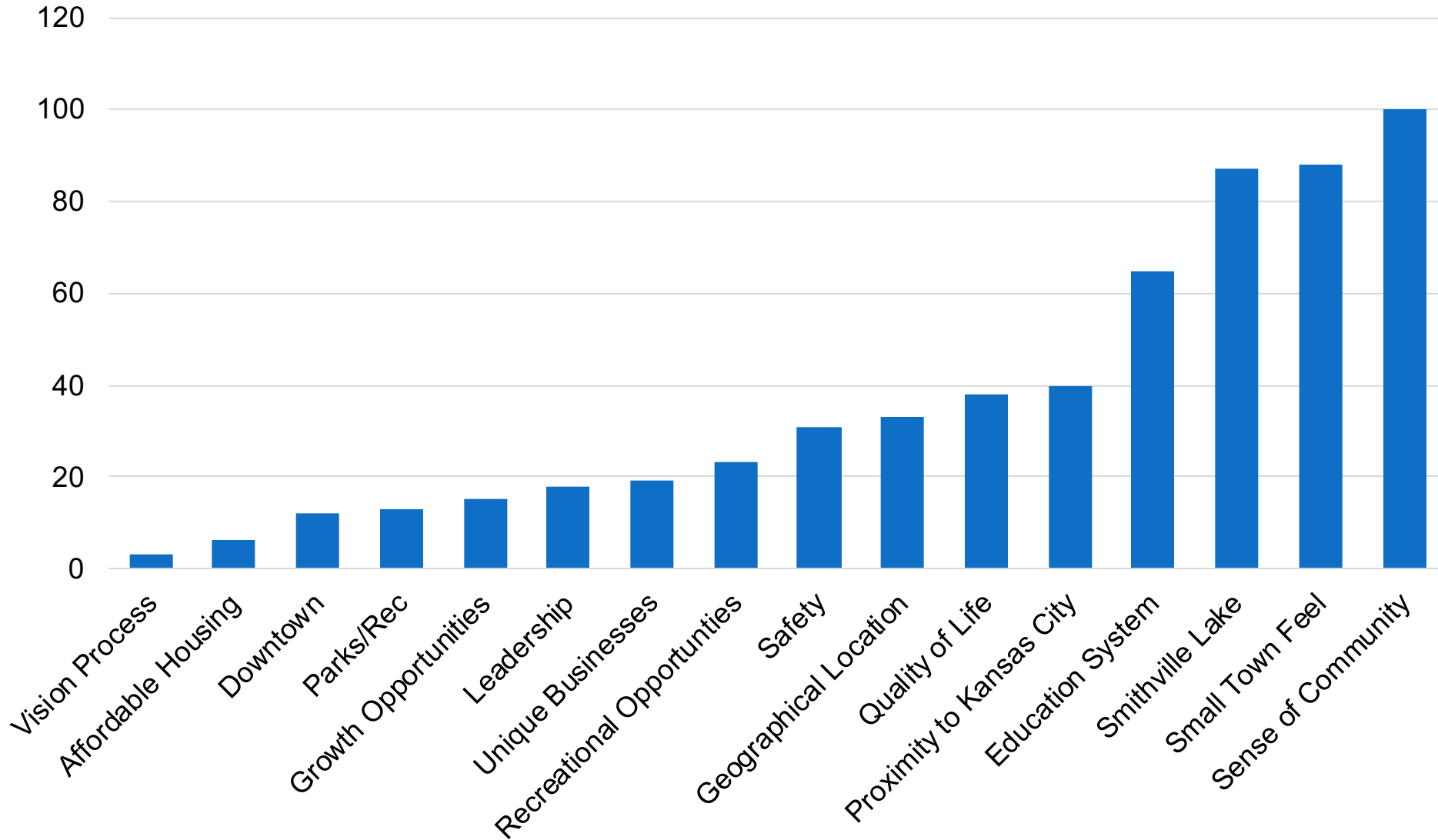
# Q9: What do you believe are the biggest opportunities for the future of Smithville in the next 5 - 10 years?



# Q10: What do you think are the biggest threats to the future of Smithville in the next 5 - 10 years?



# Q11: What do you think are Smithville's strengths?



# Community survey

## **Most Critical Issues:**

- Complacency and attitude of community
- Too much growth
- Concern about lack of infrastructure
- Education System/overcrowding and funding
- Lack of Economic Growth/Business Support
- Over population
- Concern about loss of 'small town feel'





# ‘Future Readiness’

**Attributes exercise – how future  
ready are we?**





# Scenario Development Framework





# Scenario Development

City of Smithville  
Community Vision Think-Tank  
Plausible Scenarios

future→iQ

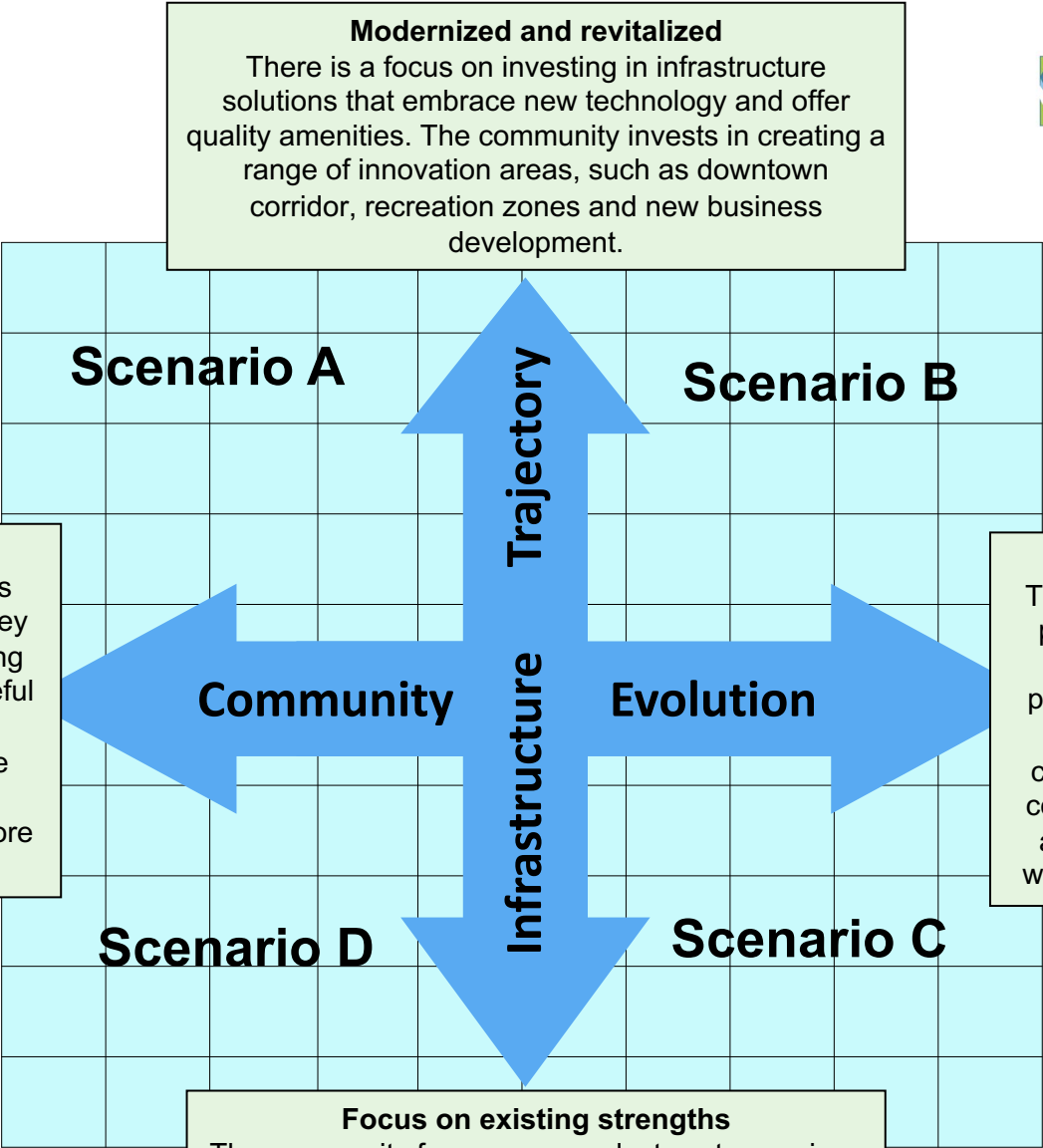
Create Future Intelligence™

[www.future-iq.com](http://www.future-iq.com)

# Plausible Scenario Matrix 2030



**Small town oasis**  
The community focuses exclusively on internal key priorities, including strong school district and peaceful neighborhoods. The community protects the small town feel, and focusses on retaining more traditional values.



**Modernized and revitalized**  
There is a focus on investing in infrastructure solutions that embrace new technology and offer quality amenities. The community invests in creating a range of innovation areas, such as downtown corridor, recreation zones and new business development.

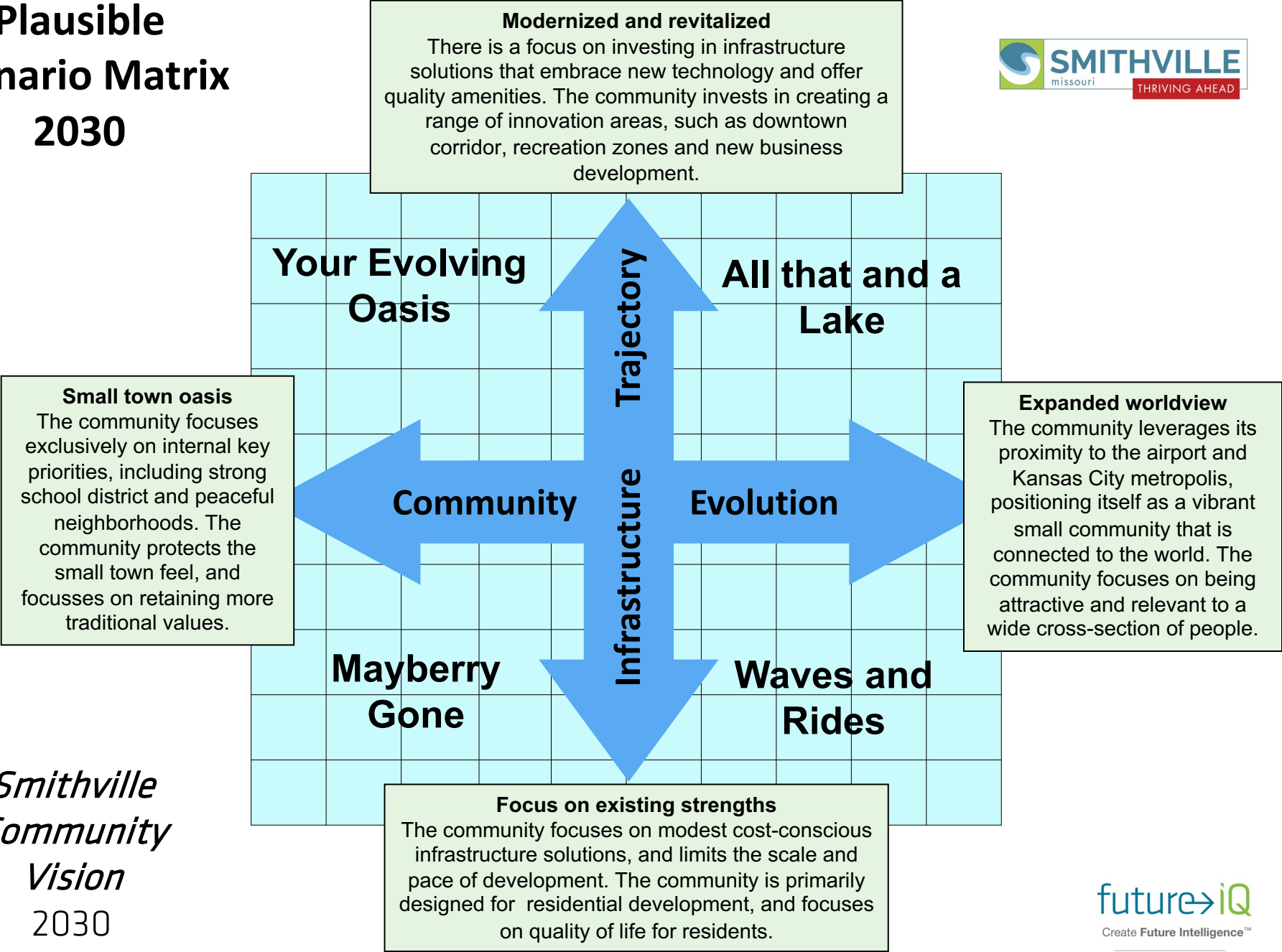
**Expanded worldview**  
The community leverages its proximity to the airport and Kansas City metropolis, positioning itself as a vibrant small community that is connected to the world. The community focuses on being attractive and relevant to a wide cross-section of people.

**Focus on existing strengths**  
The community focuses on modest cost-conscious infrastructure solutions, and limits the scale and pace of development. The community is primarily designed for residential development, and focuses on quality of life for residents.

*Smithville  
Community  
Vision  
2030*



# Plausible Scenario Matrix 2030



*Smithville  
Community  
Vision  
2030*

# Exploring the Corners

- **What characteristics exist on the outer corners of each scenario? *(Assume that a more extreme example of each scenario is realized).***
- **What continuum of change exists as we move from the center point of each scenario to the outer corners?**





# VISION SURVEYS





# Next steps







## City of Smithville Vision and Strategic Action Plan Project

There will be many opportunities to participate

### **Future Think Tank Workshop**

Saturday, June 8

*This will serve as the starting point for the comprehensive stakeholder engagement process*

### **Community Surveys**

May through September

### **Community Engagement Sessions**

June 27 - 28

### **Reconvene of Future Think Tank Workshop**

Wednesday, September 18

# City of Smithville Vision and Strategic Action Plan Project

## COMMUNITY ENGAGEMENT SESSIONS

The public is invited to attend any one of the following sessions.


<b>June 27 10:00am - 11:30am</b>	Good Shepherd Catholic Church, 18601 N 169 Highway
<b>June 27 3:00pm - 4:30pm</b>	Smithville Senior Center, 113 W. Main
<b>June 27 6:00pm - 7:30pm</b>	United Methodist Church, 505 US-169 Highway
<b>June 28 10:00am - 11:30am</b>	Smithville Mid-Continent Public Library, 120 Richardson Street
<b>June 28 3:00pm - 4:30pm</b>	St. Luke's North Hospital- Smithville, 601 S US-169 Highway
<b>June 28 6:00pm - 7:30pm</b>	City Hall, 107 N. Main

## STAY UP TO DATE WITH THE PROJECT

<http://lab.future-iq.com/city-of-smithville>







future*→*iQ® | Create Future Intelligence®

# Want to shape the future of Smithville?

Learn how to at

Learn how to at <http://lab.future-iq.com/city-of-smithville/>

# City of Smithville

## Community Visioning and Strategic Action Plan project

### THANK YOU

future→iQ

Create Future Intelligence™

[www.future-iq.com](http://www.future-iq.com)

